

# Providence Regional Cancer Partnership

## 2022 Annual Report



Providence Regional  
Cancer Partnership



Commission  
on Cancer®  
ACCREDITED  
PROGRAM



QCP  
Quality Cancer Care: Recognizing Excellence

## Vision Statement

A comprehensive, regional, state-of-the-art, single destination designed exclusively for the cancer patient and family with integrated and seamless clinical, operational, and business purposes.



Ambulatory Infusion Suite Nurses



Rad Onc/Gyn Onc Front Desk Caregivers



PRCP First Floor and Admin Staff



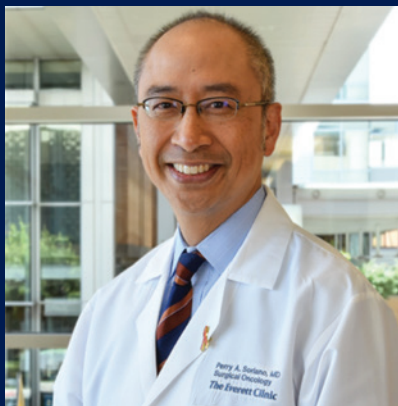
Medical Oncology Medical Assistants

*World-class care, close to home*

# Table of Contents

Chairman’s Message .....	4
Introduction: Cancer Program Administrator .....	5
Cancer Registry 2021 Report .....	6-7
History of Providence Regional Cancer Partnership .....	7
Introduction: Operating Director of Medical Oncology .....	8
Hematology/Medical Oncology .....	8
Medical Oncology Pharmacy .....	8
Palliative Care Program .....	9
Nutrition Services .....	9
Clinical Research and Cancer Care .....	10-11
Outstanding Teaching Award .....	11
PRMCE Ambulatory Infusion Suite .....	12
Nursing News .....	12
ChemoCare Committee .....	13-14
Physicists .....	15
Seamless Transitions .....	15-16
Comprehensive Breast Center .....	16
Patient Support Services .....	17
Survivorship Program .....	18
Integrative Medicine Services .....	19
Naturopathic Oncology Services .....	20
Cancer Genetics Clinic .....	21
Volunteer Spotlight .....	22
Physician Profiles .....	23-24
Patient Support Services and Groups .....	25-26
Services .....	27
Clinicians .....	28
Multidisciplinary Cancer Committee Members/Leadership .....	29

## Director Profile



### **Perry A. Soriano, MD, FACS**

Medical Director,  
Providence Regional  
Cancer Partnership

Chairman, Multidisciplinary  
Cancer Committee

Surgical Oncologist

#### **Affiliation**

The Everett Clinic,  
Part of Optum

#### **Medical School**

The University of Chicago  
Biological Sciences Division,  
Pritzker School of Medicine

#### **Board Certification**

Surgery

## Chairman's Message

### **Perry A. Soriano, MD, FACS**

Medical Director, Providence Regional Cancer Partnership

As a surgical resident, I met a kind, delightful, 50-year-old woman admitted with a small bowel obstruction. Her scans revealed a blockage of her entire small bowel because of a tumor at the beginning of her colon, the cecum, and a tumor in the liver – stage IV colon cancer. Her daughter's wedding was in a year, and the patient was fearful she may not live to see it. We relieved her obstruction and removed the metastatic disease by performing colon and liver surgery. The patient received chemotherapy to prevent the cancer from coming back. She celebrated her daughter's wedding and then went on to join many more family gatherings and achieved a long-term remission. The ability to offer hope in a scenario that appeared grim, and to have the tools and expertise to achieve a wonderful outcome, going from stage IV scenario to cure, are why I became a Surgical Oncologist.

This focus on the person, our patients, and their individual journeys when facing cancer with their loved ones is the reason we are here. The Cancer Partnership's founding mission is to provide a seamless journey, linking specialists in Cancer Care in a coordinated system focused in one place, in order to provide the best care. This has been true since our founding in 2007 and will continue to be our driving force, to care for and achieve the best outcomes for people in our community.

We are proud of the Providence Regional Cancer Partnership's ongoing record of being among the highest quality and highest value (lowest cost) programs in Washington based on research comparing cancer programs across the State. This is also true at a national level where a university study from California recognized our program as the leader among regional cancer centers. The Partnership has twice achieved the Commission on Cancer Outstanding Achievement Award, placing us in the top 10-15% of cancer programs nationally. Our Cancer Program has much to offer right here, close to home.

A message reflecting on our program would be incomplete without acknowledging the impact of COVID, its effects on the workplace and our people, and the toll in lives lost since the first U.S. case in January 2020 right here in Everett. I wish to express gratitude for the care the Partnership Team provided and in findings ways stay open for our patients. We also thank everyone in the community who helped keep each other safe. As the pandemic acutely reminded us, we are all in this together and kindness goes a long way.

With much to highlight of our program in the annual report, we thank our Cancer Team for their contributions, and most importantly to our patients who make our days rewarding. Inside you will find highlights of our Genetics Clinic, Radiation Oncology Services, Physicists, Medical Oncology Services, Pharmacy, Palliative Care, Nutrition Services, Clinical Research, Ambulatory Infusion Suite, Nursing News, Breast Center, Patient Support Services, Integrative Medicine, Volunteers, Naturopathic Oncology Services, among others, and profiles of our newest clinicians and teammates. We are confident you will find the pages ahead worthwhile. Thank you for reading.

# Introducing

## Dawn Gilbert, MHA, BSN, RN, CNML

Cancer Program Administrator

Our team at Providence Regional Cancer Partnership is driven by a unified vision: to deliver comprehensive cancer care that encompasses not only treatment but also empathy, support, and optimism. Our team of devoted professionals stands at the forefront of this mission, tirelessly working to enhance the lives of those affected by cancer within our community.

At the core of our Cancer Program lies a vision deeply rooted in the belief that each individual's journey through cancer should be met with support, personalized care, and high-quality treatment. Our objective is to establish a cancer care model that encompasses all aspects of the cancer experience, ensuring that no one faces this battle in isolation. Comprehensive cancer care extends beyond the medical interventions themselves. It embraces a holistic approach that addresses the physical, emotional, and psychological well-being of patients and their loved ones. Our program strives to provide a wide array of services and resources, including:

- **Multidisciplinary Care Teams:** We bring together a diverse group of specialists from various disciplines to collaborate and develop tailored treatment plans. This approach ensures that each patient receives the best possible care customized to their unique needs.
- **Facilities and Technology:** We invest in technology to deliver advanced diagnostic techniques, treatments, and supportive therapies. Our investments allow us to provide high quality care.
- **Patient-Centered Support:** We recognize that the cancer journey can be overwhelming, and emotional support is crucial. Our program offers a range of support services, including counseling and support groups to empower patients and their families throughout the process. Some of our classes include Art Therapy and Gentle Yoga. We offer support groups focusing on Living Beyond Cancer, Women with Cancer, Prostate Cancer, Colorectal Cancer, Palliative Care, and Survivorship.

I am proud to serve as the new Senior Director of Cancer Services. My 15 years of nursing and leadership background at Providence Regional Medical Center Everett, including 5 years in Oncology, has equipped me with an understanding of the unique challenges faced by cancer patients and the importance of comprehensive care. I am committed to the future of our Cancer Program and ensuring the highest standards of care for our community.

### Administrator Profile



#### Dawn Gilbert MHA, BSN, RN, CNML

Cancer Program Administrator  
Senior Director of Cancer Services

#### Affiliation

Providence Regional Medical Center,  
Everett

#### Education

Master of Healthcare Administration  
University of Providence

Bachelor of Science in Nursing  
University of Washington

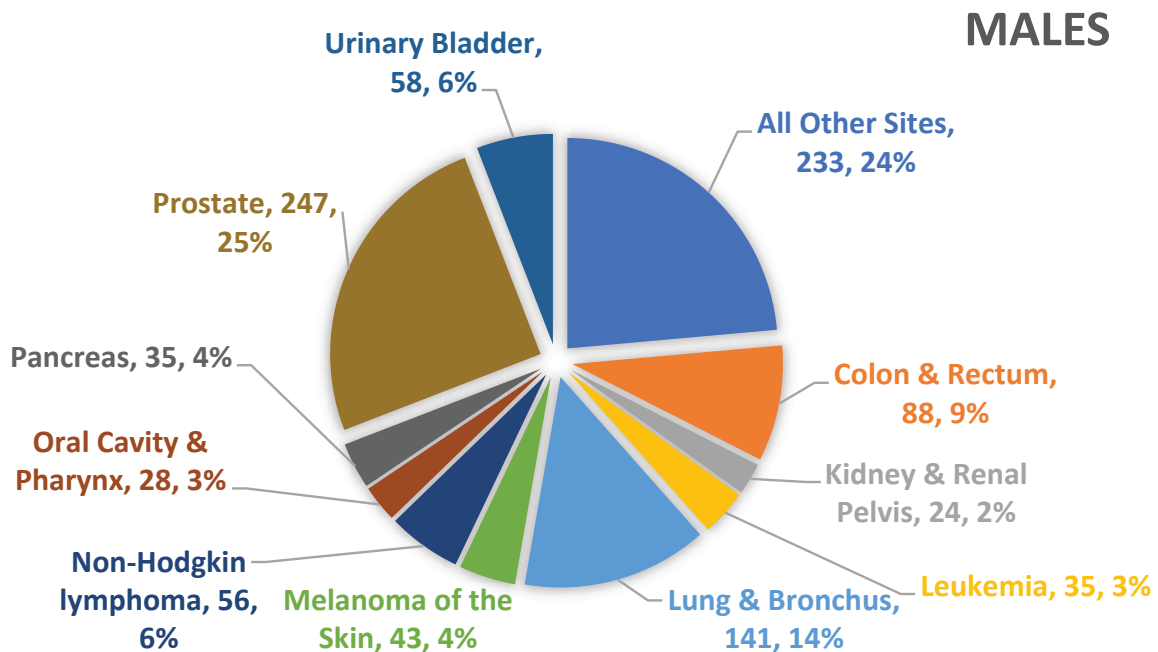
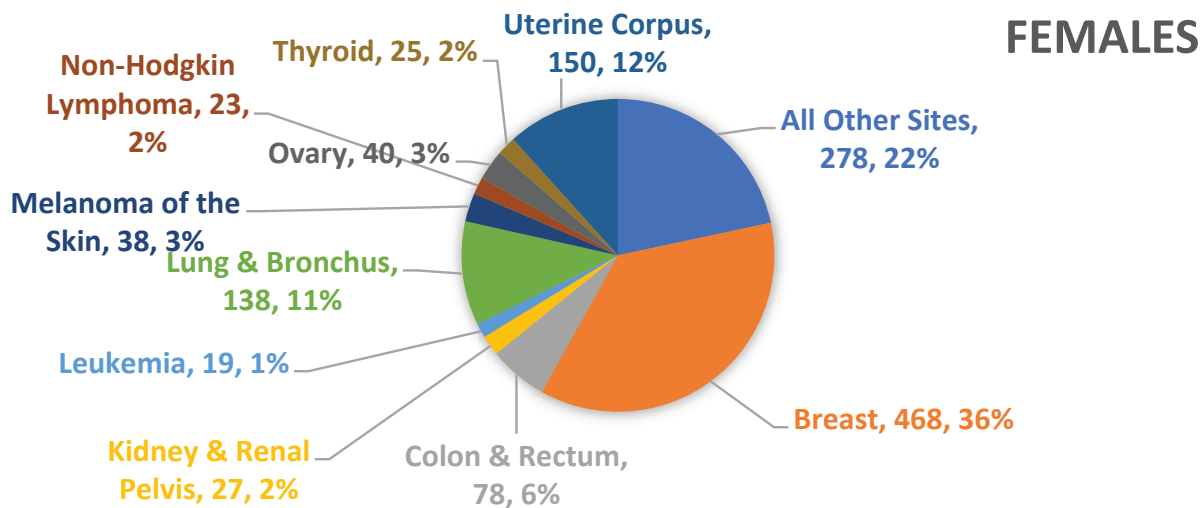
# Cancer Registry 2021 Report

A Cancer Registry is an information system designed for the collection, management and analysis of data on patients with the diagnosis of a malignant disease. The Registry systematically collects information about the types of cancer that occur, the stage of disease at the time of diagnosis, the treatments received, and the outcomes of treatment by maintaining lifetime follow-up on cancer patients. The Registry staff is involved in analyzing clinical cancer information for the purpose of education, research and outcome measurement.

The Cancer Registry serves as one of the vital components of an approved American College of Surgeons (ACoS) Cancer Program. Together with the Multidisciplinary Cancer Committee, the Cancer Registry maintains compliance with state and national registry requirements for a Comprehensive Community Hospital Cancer Program. PRMCE added 2,272 new cases in 2021. Our online database dates back to 1990 and our hardcopy database goes back to 1974.

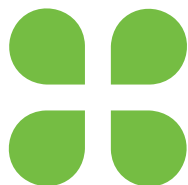
The Registry follows the health status of our cancer patients annually throughout their lifetime which equates to following over 6,000 patients a year. The ACoS requires a follow-up rate of 90%; the Registry maintains a rate of 88%.

## 2021 Summary By Body System and Sex Report



## Incidence of Cancer by Site and Gender 2021

Primary Site	# of Cases	Male	Female
Breast	472	4	468
Lung	279	141	138
Prostate	247	247	--
Colon	104	50	54
Melanoma	81	43	38
Corpus Uteri	150	--	150
Bladder	73	58	15
Lymphoma (NHL)	79	56	23
Kidney/Renal Pelvis	51	24	27
Rectum/Rectosigmoid	60	38	22
Brain/Nervous System (benign)	55	19	36
Leukemias	54	35	19
Pancreas	63	35	28
Oral Cavity/Pharynx	38	28	10
Thyroid	31	6	25
Multiple Myeloma	35	23	12
Ovary	40	--	40
Brain (malignant)	23	13	10
Myeloproliferative Disease/MDS	48	35	13
Stomach	29	14	15
Liver/Intrahepatic Bile Duct	30	16	14
Esophagus	24	16	8
Cervix Uteri	20	--	20
Other Endocrine (including Thymus)	16	8	8
Larynx	12	9	3
Vulva	10	--	10
Soft Tissue (including Heart)	10	5	5
Testis	10	10	--
Small Intestine	15	5	10
Gallbladder	1	0	1
Other Biliary	16	10	6
Hodgkins Lymphoma	6	4	2
Other	90	36	54
<b>Total</b>	<b>2272</b>	<b>988</b>	<b>1284</b>



## History of Providence Regional Cancer Partnership

Opened in 2007 as a collaboration between four premiere provider organizations in one cancer center, our Cancer Program is currently supported by Providence Regional Medical Center Everett, Providence Comprehensive Breast Center, The Everett Clinic - Part of Optum, Northwest Washington Radiation Oncology Associates, Western Washington Medical Group, Northwest Medical Physics Center, Seattle Integrative Oncology, and Bastyr University.

Our Cancer Program includes a comprehensive array of inpatient and outpatient surgical, medical, and radiation oncology services and has been accredited as part of Providence by the American College of Surgeons (ACoS) since 1979.

In addition, we have innovative programs in Integrative Medicine and Psychosocial Support, including Naturopathic Medicine, Nutrition Support, acupuncture, yoga, and various patient support groups and classes.



## Caregiver Profile



### Dallas Kathan, BSN, RN, PCCN

Regional Operating Director, Medical Oncology

#### Affiliation

The Everett Clinic, Part of Optum

#### Education

Everett Community College: AAS, ADN  
Western Governors University: BSN  
Western Governors University: MSN -  
*In Process*

#### Certifications

WA RN License  
PCCN (Progressive Care Certified Nurse)  
BLS  
Genetics, Genomics, and Genethics  
Certification

#### Formal Training

FEMA Emergency Preparedness: HICS  
MCI  
Leadership Snohomish County- 2020

## Introducing

### Dallas Kathan, MHA, BSN, RN, CNML

Regional Operating Director,  
Medical Oncology

“I started this journey by earning a nursing degree locally and gaining over a decade of experience in the healthcare system. During that time I have completed several professional programs and my Bachelors of Science in Nursing before moving into leadership and management.

Over the years I have worked with several organizations, both inpatient and outpatient, that have afforded me the opportunity to view healthcare from different perspectives. Through these experiences I have found my passion lies in working with healthcare teams to develop high quality service lines to care for members of our community.

I am excited to have been granted the opportunity to work with oncology as I truly believe in what we are doing as a healthcare team and more so what we are doing as a partnership for the community. We employ and collaborate with some of the brightest minds in the industry from our providers to administration, and clinical staff on the front lines. This is a special opportunity in which everyone on the team plays a role in providing the best possible patient experience to those we serve.”



## Hematology/Medical Oncology

The Everett Clinic, Part of Optum, was awarded the Quality Oncology Practice Initiative (QOPI) Certification in 2014 for outpatient hematologyoncology practices. Currently only five clinical practices have this certification in Washington state. The award promotes quality, value, and accountability in cancer care and further enhances society’s longstanding and robust efforts in the field of oncology.



## Medical Oncology Pharmacy

The pharmacy at the Providence Regional Cancer Partnership includes a diverse group of individuals, including pharmacists and technicians, speaking six different native languages. We work closely with everyone from scheduling, finance, nursing, physicians, and the materials management team. We ensure the medication you need is available and administered on the right schedule and at the right dose.



Medical Oncology Pharmacy Team



# Palliative Care Program

By *Andrew Yang, MD*

*Medical Director, Palliative Care*

Palliative Care is a field of medicine focused on the management of both physical and psychosocial symptoms in patients who have serious or life-threatening illnesses.

Unlike hospice, patients can receive palliative care while still pursuing treatments for their cancer. Our Palliative Care Program at the Providence Regional Cancer Partnership is comprised of a multidisciplinary team, including physicians, nurse practitioners, nurses, and social workers, who all work together to address complex symptoms management, and to assist with addressing advanced care planning needs.

Our program is exclusive to patients of the Cancer Partnership, and we focus especially on referrals for patients with advanced or incurable cancers such as incurable lung or pancreatic cancers.



# Nutrition Services

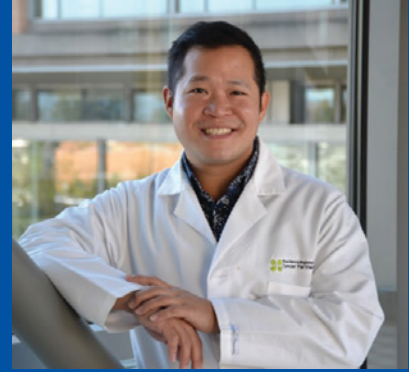
Nutrition plays an important role in cancer prevention, treatment, and survivorship. Working with a Registered Dietitian may result in fewer treatment-related side effects, fewer hospitalizations, and improved quality of life.

Services provided include dietary recommendations, managing side effects, Nutrition Support (tube feeds/TPN), prevention nutrition, and weight management (gain or loss).

Tanja blends her certifications in Oncology Nutrition and Clinical Nutrition Support with her Bastyr University education, as well as her love for food, to provide practical nutrition education and counseling. Passionate about helping patients maintain optimal nourishment throughout cancer treatment and survivorship, she provides tools for symptom management as well as diet recommendations.

It is no surprise that in her off time, Tanja enjoys cooking and sharing meals with friends and family and nurtures a minor addiction to cookbooks.

## Physician Profile



### Andrew Yang, MD

Medical Oncologist  
Medical Director, Palliative Care

#### Affiliation

The Everett Clinic, Part of Optum

#### Education

Medical Degree  
State University of New York

#### Residency & Internship

Icahn Internal Medicine Residency

#### Fellowship

Brown University Hematology  
and Oncology  
Memorial Sloane Kettering  
Cancer Center  
Hospitalists and Palliative Care

## Dietitian Profile



### Tanja Pavlovic, RD, CSO, CNSC

Clinical Oncology Dietitian

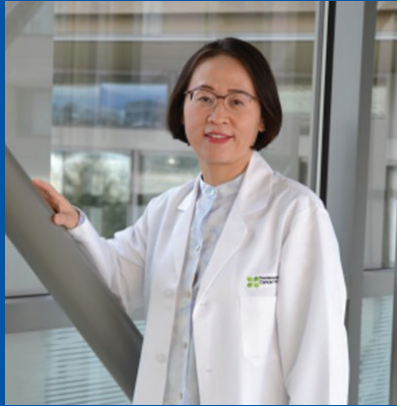
#### Affiliation

Providence Regional Medical Center,  
Everett

#### Education

Bastyr University

## Physician Profile



### Meng Zhao, MD, PhD

Medical Oncologist/Hematologist  
Medical Director, Clinical Research

#### Affiliation

The Everett Clinic, Part of Optum

#### Education

Medical Degree  
Tongji University

#### Residency

The University of Texas Southwestern  
Medical Center, Internal Medicine

#### Fellowship

Ohio State University Wexner Medical  
Center, Hematology & Medical Oncology

#### Board Certifications

Medical Oncology  
Hematology  
Internal Medicine

#### Academic Appointment

Clinical Assistant Professor  
at Washington State University

#### Philosophy of Care

“Provide my patients with comfort and confidence, along with high quality care. I’m committed to providing personalized care, a shared decision-making practice model to guide open dialogues about diagnoses and treatment options with patients and their families. This is facilitated by my ongoing commitment to clinical research and medical education.”

## Clinical Research and Cancer Care

*By Meng Zhao, MD, PhD*

*Medical Director, Clinical Research*

Clinical research is essential for cancer care because it offers patients access to new treatments and therapies, improves patient outcomes, and provides specialized care. It also helps the practice of cancer care by advancing the field and providing new knowledge and insights into the best ways to deliver cancer care in a community setting.

New treatments and therapies developed through clinical research can provide patients with better options for managing their disease and can also help to alleviate symptoms and side effects of cancer treatment. Additionally, participation in clinical research can provide patients with a sense of hope and a feeling of being actively engaged in their own care. In this way, clinical research can have a positive impact on the physical and emotional well-being of cancer patients and their families.

As a clinical researcher, I am constantly aware of the challenges and opportunities that come with this field. I am dedicated to staying up to date with the latest advances in cancer research and incorporating them into our practice. As the Medical Director for Clinical Research at PRCP, I am committed to providing access to the latest cancer treatments and clinical trials for our patients.

There are a lot of potential barriers for clinical trial participation in community oncology practice. Access to clinical trials is one of the biggest challenges faced by patients and physicians alike. From a patient standpoint, there are numerous apprehensions such as cost, travel, alternatives to treatment, fear of getting less or no treatment, potential adverse effects, etc. Here at PRCP, we have a robust institutional research program with an experienced research team that effectively bridges this access gap and overcomes these barriers.

Our dedicated team of medical professionals who specialize in cancer research includes oncologists, research coordinators, pharmacists, nurses, and other specialists who work together to provide the highest quality of care for our patients. We understand the importance of offering these opportunities closer to home, as it can be a significant burden for patients and their families to travel long distances for clinical trials.

The research staff at PRCP is extremely knowledgeable and willing to help. I am continually impressed by their understanding of clinical trial protocols, approachability and ease to work with. The research staff simplify clinical trial enrollment processes for patients; they also help patients navigate through a complex treatment plan. For our patient, this added support goes a long way in providing comfort in an otherwise daunting journey of cancer treatment.

PRCP with its clinical research program truly represents the ideal cancer care and I feel privileged to have access to it. I am excited to see PRCP continue to develop and improve for the greater benefit of our community.

## Outstanding Teaching Award Goes to Amir Mehrvarz Sarshekeh, MD

Dr. Amir Mehrvarz Sarshekeh received the Outstanding Teaching Award during Residency Training Celebration at Elson S. Floyd College of Medicine, Washington State (WSU), in Everett, WA.

“I’m incredibly humbled and honored to receive the Outstanding Teaching Award. ... The amazing teachers and residents whose motivation, curiosity, and enthusiasm to learn inspired me,” says Dr. Mehrvarz.

Nominations from Internal Medicine residents and feedback from faculty members are the basis of the award. Residents enjoyed their rotation with Mehrvarz, describing him as “kind, approachable and fun to work with.”

“He is an effective teacher - excellent job teaching what you need to know, in a way you will remember, to succeed. He’s an engaged lecturer and a great preceptor. We are lucky to have him share his knowledge with us,” comments a resident.

Dr. Mehrvarz joined the WSU Internal Medicine Residency Training Program in 2021 with his Everett Clinic oncologist colleagues. He taught Hematology and Medical Oncology. Dr. Peter Jiang enjoys listening to Mehrvarz’s lectures, sharing an office with him, and is “so proud of Dr. Mehrvarz on achieving this award. His dedication to teaching excellence is appreciated and exemplifies our department’s efforts in training the new generation of best doctors—it takes a village.”

### Physician Profile



#### Amir Mehrvarz Sarshekeh, MD

Medical Oncologist/Hematologist  
Medical Director, Medical Oncology

#### Affiliation

The Everett Clinic, Part of Optum

#### Education

Medical Degree  
Tehran University

#### Residency

The University of Texas

#### Fellowship

The University of Texas, M.D. Anderson Cancer Center - Hematology/Oncology

#### Board Certifications

Medical Oncology  
Hematology  
Internal Medicine

“When I was in medical school, my mother was diagnosed with incurable cancer. The loss of her profoundly inspired me to treat and fight for cancer patients. That experience has certainly added a different layer to my interactions with patients. And I believe that has prepared me well to care for my patients. When I meet with patients, I want to know who they are and what values are most important to them. Cancer treatment has to be individualized and unique for each patient. I decided to come to the Everett Clinic to practice oncology because I believe that in this place we offer a wide variety of medical expertise. We work together closely as a team to customize a care plan for each patient, and I’m very fortunate to be part of it.”

*Transcript from The Everett Clinic Physician Video Overview*

## Nurse Profile



### Jonathon Gordon, BSN, RN

Nurse Manager, Ambulatory Infusion Suite, Vascular Access, and Float Pool

#### Affiliation

Providence Regional Medical Center, Everett

#### Education

Bachelor of Science in Nursing  
Bethel College, Mishawaka, IN

#### Clinical Background

- Emergency Medicine
- Administrative House Supervisor
- Clinical Nurse Manager
- Trauma Program Manager

"I recently moved from California to the Seattle area and am happy to be a part of the team at Providence Regional Medical Center. In my short time here, I have enjoyed seeing the passion that the infusion suite staff have for patients. They show a desire to treat patients quickly and respectfully, while meeting the needs of the patients during their treatments. I feel that this "small" department is doing "big" things for the community that we serve.

I am excited to explore the beautiful landscape of the Pacific Northwest. Outside of the office, I am often found outside hiking and exploring different areas. Seeing the mountains on my commute is very revitalizing."

## PRMCE Ambulatory Infusion Suite

The Ambulatory Infusion Suite is a 10-bed outpatient department located at Providence Regional Medical Center Everett, Colby Campus. Our purpose is to provide both oncologic and non-oncologic infusions to patients who receive care at our local clinics and community partners, including the Cancer Partnership. Some of our infusion services include chemotherapy, immunotherapy, iron replacement, hydration, blood transfusions, and antibiotics administration. Members of the infusion suite participate in various committees such as the ChemoCare Committee and Seamless Transitions Committee to continue our goals of excellence. We are honored to provide our patients with quality compassionate care, a positive patient experience, and timely services to meet their needs.



## Nursing News

Our partnership nursing teams have had changes in leadership over the past year. We welcome Jonathon Gordon, BSN, RN, Nurse Manager of PRMCE Ambulatory Infusion Suite, Vascular Access, and Float Pool; Emili Azam, RN, PRMCE 9N Nurse Manager; Aileen Romero, RN, PRMCE Assistant Nurse Manager for Ambulatory Infusion Suite; and Dorothy Todd, DNP, ARNP, Everett Clinic Medical Oncology Nurse Manager.



Courtesy of Art Therapy Group

## Nurse Profile



### Mary Jo Sarver, ARNP, ACON, CRNI, VA-BC, LNC

Clinical Nurse Specialist

#### Affiliation

Providence Regional Medical Center,  
Everett

#### Education

University of Washington

#### Clinical Background

- Cancer care for over 37 years.
- Experience in Surgical Services, Acute Care Oncology, Outpatient Medical Oncology, Radiation Oncology, Ambulatory Infusion Services and Vascular Access Team.

“A cancer care partnership that cares for a community and works to provide seamless transitions in care and services is rare in today’s competitive healthcare market. I feel working with patients, families and colleagues in hematology/oncology is an honor and privilege. Cancer is a mighty opponent and everyone’s experience unique. Listening to patients’ needs and helping to maintain quality of life, hope and faith during the journey can be complex. Working to identify and provide individualized care with healthcare providers with so many specialties, knowledge, compassion, and empathy is inspirational and gratifying.”

## ChemoCare Committee: A Look in the Rearview Mirror

By Mary Jo Sarver, ARNP, ACON, CRNI, VA-BC, LNC  
Clinical Nurse Specialist

The ChemoCare Committee is a group of oncology specialized healthcare professionals who work at PRMCE. The goal of the group is to identify and resolve barriers, educate patients and providers, and encourage certification/leadership activities and community service participation. Core members consist of pharmacy, nurses from Ambulatory Infusion Suite/Medical Oncology, nutrition, and leadership. Ad hoc members from a variety of specialties also attend to assist with projects; they may include Radiation Oncology, Spiritual Care, Environmental Services, Distribution, IT, social workers, discharge planners, etc.

The pandemic halted a lot of projects, but the group’s dedication did not waver. Some of the key accomplishments over the past year or two include:

- Design of a sign for inpatients identifying neutropenic precautions with directions and tips for all providers, patients, and their support systems. The tool allows for consistent and evidence-based care independent of patient placement.
- Design and implementation of an electronic documentation system for treatment delivery of chemotherapy plans. This design led to an award-winning poster presentation and publication in the *Journal of Clinical Oncology*.
- Creation of a patient nutritional handout on dietary tips during treatment and throughout the cancer journey. Highlighted the availability of a certified nutritionist through the Partnership and reviewed menu options for inpatients that were neutropenic.
- Participation and volunteerism in virtual and live events for community sponsorship and raise funds for cancer patients, including Relay for Life, Strides, Wheels on the Waterfront, American Cancer Society Gala, etc.
- Implementation of an oncology clinical academy to expedite and streamline onboarding for new oncology RNs. Included a two-day live skills lab and production of videos on nursing care and administration of cytotoxic medications to be used for onboarding new staff, annual training, and refresher courses.

*continued on page 14*

## Manager Profile



**Kristin Callicotte, B.S., R.T.(T)**  
Manager, Radiation Oncology

### Affiliation

Providence Regional Medical Center,  
Everett

### Education

Bachelor of Science, Radiation Therapy  
Oregon Health & Science University

### Clinical Background

Radiation Therapist, Lead, Supervisor,  
Chief Radiation Therapist, Chief Clinical  
Operations Radiation Oncology,  
Manager Radiation Oncology

“The Department of Radiation Oncology is driven by our united passion to provide high quality, compassionate cancer care, keeping safety as our top priority and putting patients first. I have always been intrigued by the constant evolution of technology and new treatments in radiation therapy. The leaps and bounds the field has taken in such a short amount of time keeps me motivated and excited to see what’s next. I am inspired by the resiliency of our patients during these challenging past few years and grateful for my team and their ability to maintain human connection through it all which I believe has attributed to our unity and strength as a team. Each day they put their own lives aside to focus on providing the best care for our cancer patients. It drives and motivates me to be a constant positive force to elevate our department. While my role has changed over 15 years, my goal has remained the same to make things better wherever I go for my team and for the patients and their families.”

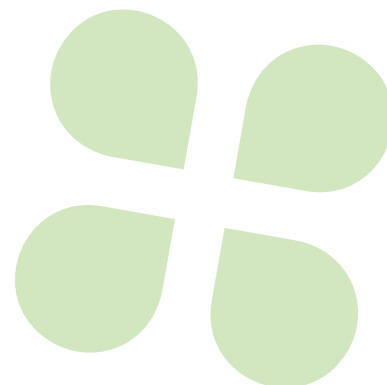
*continued from page 13*

- Streamlining daily oncology inpatient rounds (moving to electronic form, changing time to improve compliance and round quality, etc.)
- Focusing on staff retention through highlighting staff accomplishments, assisting with scholarship applications, providing a safe and caring environment for continued learning, and encouraging research, mentoring and preceptorship for degree advancement.

Healthcare throughout the United States is facing challenging times related to staff shortages, financial constraints, closure of resources, and changes in delivery systems. The ChemoCare Committee is invested in providing a safe and welcoming environment in the community for the patients and staff we serve. We look forward to facing the future as a team where passion, compassion, and commitment guide the way.



**ChemoCare Committee**



## Medical Physicists



NMPC Colleagues

**Northwest Medical Physics Center (NMPC)** provides onsite clinical medical physics services to centers across Alaska, Washington, Oregon, Idaho, Montana, Nevada, Hawaii, and Guam since the early 1970's.

These services include:

- Long Term Medical Physics Onsite Coverage
- Medical Physics Consultation
- Shielding Design and Survey
- Acceptance Testing
- Linear Accelerator Commissioning
- Beam Modeling and TPS Commissioning
- Rapid Arc Commissioning
- Electronic Brachytherapy (EBT) Calibration
- Locum Medical Physics
- Remote Dosimetry
- Annual Quality Assurance Testing for Medical Linac, Radiation Oncology Imaging, and TPS

**Physicists who proudly support PRCP are:**

Yong Choi, PhD  
Patrick Stevens, PhD  
Xiaolin Tu, PhD  
Lida Arvan, MS

## Seamless Transitions Through the Complex Journey of a Cancer Patient

*By Mary Jo Sarver, ARNP, ACON, CRNI, VA-BC, LNC  
Clinical Nurse Specialist*

Seamless transitions between services during the cancer journey can be challenging. Every individual is unique and many variables affect their plan of care: personal beliefs, past experiences, environmental conditions, distance to and cost of treatments, insurance planning, community support systems, employment, and care of family members.

Care is administered in multiple settings: long-term care, acute care, clinics, homes, ambulatory care, and rehabilitation centers. The focus of care varies from curative, palliative, and/or symptom control and continues into survivorship follow-up. Supportive services for mental, spiritual, and physical well-being are not a one-size-fits-all package. Cultural beliefs and making sure options are understood when language barriers exist is paramount. Bridging the gap and creating a smooth transition for patients who need multiple services is the goal of seamless transitions.

Cancer Care Conferences are the initial start of the journey related to communication between providers. The attendees at conferences include medical oncology, radiation oncology, surgeons, genetic counselors, research, pathology, imaging, clinical nurse specialist, program directors, and, based on the diagnosis, may include social workers, rehab, and nutritional services. Discussion includes a patient's desire for integrative medicine or support group referrals. Every patient is discussed in a cancer conference based on the diagnosis and on occasion discussed post intervention or pathology findings.

Currently there are five conferences per week: Breast, Gastrointestinal/Gynecology/Genitourinary, Lung, Palliative Care, and Friday Cancer Conference Series (Neurology/Other). The conferences are designed to include the essential experts to review cases and make observations and recommendations for treatment options based on guidelines and standards of care and the clinical needs. Clinical needs may encompass other health issues such as diabetes, heart conditions, kidney disease, etc. Charts, imaging, patients' performance status, risk factors, and preferences are reviewed along with staging and potential research opportunities.

*continued on page 16*

## Manager Profile



**Laura Kendrick, B.S., ARRT (R)(M)**  
Manager, Comprehensive Breast Center

### Affiliation

Providence Regional Medical Center,  
Everett

### Education

Radiologic Science Healthcare  
Yakima Valley Community College  
Bachelor of Science in Imaging Science  
Boise State University

### Clinical Background

Twenty-five years of being a  
Mammographer, Ultrasonographer,  
Department Lead, Clinical Instructor,  
and Manager at Providence  
Comprehensive Breast Center

“Walking into a Breast Center for your mammogram can be a difficult journey. I am passionate about providing expert care, comfort to our patients and detecting breast cancer early. The Breast Center is a very special place to work, in addition to providing breast imaging and performing biopsies we provide a supportive High Risk Clinic that navigates many breasts related issues. Having been recently diagnosed with breast cancer, I consider myself an advocate to everyone that walks through our door. Compassionate patient care along with innovative technology is my goal for providing patients with the best chance for early detection.”

*continued from page 15*

Cancer care is complex and seamless transitions in a timely and coordinated fashion is essential for patient satisfaction and safety. The pandemic caused rapid changes in healthcare delivery and barriers to care. The Cancer Partnership is committed to continually evaluating system flow and teaming together to change and resolve identified barriers. Rebalancing, replacing, and initiating new ways to deliver care and navigating the system is challenging, but we are here for our community.



## Comprehensive Breast Center

*By Laura Kendrick, B.S., ARRT (R)(M)*  
*Manager, Comprehensive Breast Center*

At the Comprehensive Breast Center at Providence Everett Regional Medical Center, we diagnose and treat cancer and benign conditions of the breast in coordination with the Cancer Partnership and The Everett Clinic. With a team approach that includes radiology, breast surgery, genetics, High Risk Clinic, pathology, medical and radiation oncology, patients can ensure state of the art advanced care for best possible outcomes.

The Comprehensive Breast Center is accredited by the American College of Radiology and the National Accreditation Program for Breast Centers. This is the gold standard in mammography. The established guidelines include 3D mammograms, ultrasound, and advanced biopsy procedures.

The question that always arises is when should you start screening mammograms? At the Comprehensive Breast Center, we follow the American Cancer Society which recommends that most women start annual screening mammograms at age 40 (*Oeffinger et al., 2015*). These recommendations can differ based on other factors such as a family history of breast cancer.



# Patient Support Services

By Kathryn Johnson, PhD, ATR  
Clinical Psychologist/Art Therapist  
Medical Director, Psychosocial Services

A multidisciplinary team comprised of a social worker, nurses, psychologists, chaplains, patients, and other health professionals began the process of developing the Patient Support Department at the Cancer Partnership more than a year before we opened our doors. We came together with a mission to provide services onsite to care for the physical, emotional, and spiritual needs of patients and their loved ones. Throughout the years we have continued to support and care for the diverse needs of our patients across the continuum of cancer treatment.

The Patient Support Team is comprised of clinical social workers, a psychologist, doctoral psychology students, a patient navigator, dietitian, financial counselors, and others who work in partnership with the clinical teams and other integrative services. Most services are offered free of charge, and support groups are available to all community members.

We assess all patients for psychosocial distress and offer resources, referrals, and direct services to meet their needs. We know that the diagnosis and treatment of cancer can be a major life crisis for patients and their families. For most patients, it is stressful and anxiety-provoking at best. We strive to remove barriers to care, and to make patients and loved ones more comfortable as their condition is treated.

The Patient Support Team may meet with patients by phone or in person while they are receiving chemotherapy, in the office, or in a group setting. We currently offer eight support groups, and our group offerings shift based on the needs of patients. Psychosocial services are an integral part of care at the Cancer Partnership, and we are pleased to care for the whole person; body, mind, and spirit.



## Art Therapy Group Artists

Art pieces featured on pages 12, 17, 18, and 24 of our annual report were created by patients in our Art Therapy Group assisted by Dr. Kathryn Johnson, a certified Art Therapist.

## Social Worker Profile



**Megan Bannister, MSW, LSWAIC**  
Clinical Social Worker, Patient Support Services

### Affiliation

Providence Regional Medical Center, Everett

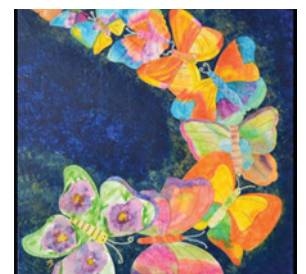
### Education

University of Washington  
Practicum-Fairfax Behavioral Health, VA  
Puget Sound PTSD Clinic

### Medical Specialties/Interests

Facilitator of PRCP's Living Beyond Cancer and Women with Cancer support groups; member of Providence Critical Incident and Stress Management (CISM) Team

"My goal is to reassure every patient that their experience is unique and their feelings are valid. I utilize several clinical practice theories to provide counseling regarding adjusting to and coping with cancer diagnosis, treatment, side effects, late effects, and end-of-life. I am skilled at addressing practical concerns and work hard to ensure patients are aware of available resources. I am proud to work on a team that embodies the Providence mission statement and promise: Know me, care for me, ease my way."



## Social Worker Profile



### Stephen Blount, MSW, LSWAIC

Clinical Social Worker, Patient Support Services

#### Affiliation

Providence Regional Medical Center, Everett

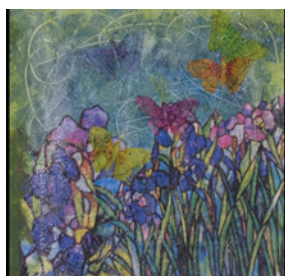
#### Education

University of Washington

#### Certification

Carol LaMare Scholar in Oncology and Palliative Care

"As an oncology social worker living in Everett, I have a strong commitment to serving seriously ill patients and families in my community. This comes from personal experience with cancer in my family and knowing the struggles that come with treatment. My clinical practice involves an eclectic approach including Mindfulness-Based Stress Reduction, Cognitive Behavioral Therapy, social justice and palliative care. I am grateful to work with a team that truly puts the patient first."



## Survivorship Program

By Kathryn Johnson, PhD, ATR  
Clinical Psychologist/Art Therapist  
Medical Director, Psychosocial Services

Cancer survivorship begins at the time of diagnosis and continues throughout the lifespan. There are estimated to be more than 18 million cancer survivors in the United States, representing more than 5% of the population.

The number of survivors is expected to increase about 30% over the next 10 years, with about 67% living for more than 5 years, and 18% living for more than 20 years after diagnosis. We are pleased to have programs available onsite at the Cancer Partnership for this growing patient population.

At the Cancer Partnership we recognize that patients have specific needs after completing active treatment. Survivorship care has been a developing part of our program over the years, and we are dedicated to providing appropriate treatment for patients from diagnosis, through treatment, to wellness.

The Survivorship Program at Providence Regional Cancer Partnership consists of two primary components: The Survivorship Medical Appointment and the Survivorship Series. At the completion of active treatment, many patients are scheduled for a survivorship medical appointment, at which time they receive a Cancer Treatment Summary and a Survivorship Care Plan. This visit focuses on management of ongoing symptoms, awareness of potential late effects, healthy lifestyle, and psychosocial aspects of cancer survivorship. A plan is put in place to transition some care back to primary care, while maintaining appropriate oversight and follow-up with oncology.

The Survivorship Series is a 6-week series designed to help patients adjust to life after treatment. The series is facilitated by Patient Support staff, with presentations from specialists to answer questions related to management of late effects, maximizing wellness through diet, exercise and self-care, and addressing the emotional impact of cancer.

Cancer survivors also have access to a range of groups and services post-treatment including, but not limited to, dietary counseling, integrative medicine services, individual and family counseling, art therapy, yoga, and the Living Beyond Cancer support group.

# Integrative Medicine Services

By *Laura Sobieck, DO, ABIHM*

*Medical Director, Integrative Medicine*

The Integrative Medicine Department at Providence Regional Cancer Partnership provides evidence-based, high quality Integrative Medicine services to help support patients throughout all stages of treatment. Integrative Medicine specialists utilize a whole person approach to medical care, incorporating physical, mental/emotional, and spiritual health recommendations to promote health and healing, as well as prevent disease. We work closely with patients to help maximize quality of life, while minimizing side effects and complications of treatment.

Our highly trained team of specialists include a board-certified Integrative Medicine and Osteopathic Medicine physician, board certified Integrative Naturopathic Oncology doctors, licensed acupuncturists, and certified yoga teachers. As members of the treatment team within the Cancer Partnership, our Integrative Medicine specialists coordinate care with other treatment team members to provide patient-centered, high quality care following best practices and clinical evidence. Our specialists provide recommendations ranging from nutritional and culinary medicine tools, mind-body medicine techniques, and manual therapy modalities to create individualized Integrative medicine treatment plans that support patients throughout cancer treatment and beyond.

Dr. Sobieck states, “I feel fortunate be able to balance the Science and the Art of Medicine in my role as an Integrative Medicine physician for the Integrative Medicine Department at Providence Regional Cancer Partnership. As Medical Director of Integrative Medicine, I am excited for the opportunity to find ways to expand the Integrative Medicine services we offer our patients within Providence Regional Cancer Partnership. I view healthcare through a holistic lens which incorporates physical, mental, and spiritual health. I am passionate about partnering with my patients to find ways to support their health and healing throughout treatment by utilizing a combination of Integrative Medicine modalities and techniques. My goal is to help promote patients’ overall quality of life no matter what stage of treatment they may be in.”

## Physician Profile



### **Laura Sobieck, DO, ABIHM**

Medical Director, Integrative Medicine

#### **Affiliation**

The Everett Clinic, Part of Optum

#### **Education**

##### **Medical Degree**

##### **Doctor of Osteopathic Medicine**

Western University of Health Sciences  
College of Osteopathic Medicine of the Pacific

##### **Master of Public Health for Health Professionals**

UCLA

##### **Bachelor of Arts (Psychology)**

The University of Montana

#### **Residencies**

**USC-California Hospital** - Internship

**Downey Regional Medical Center** -  
Family Medicine

**Downey Regional Medical Center** -  
Neuromusculoskeletal Medicine and  
Osteopathic Manipulative Medicine

#### **Board Certifications**

Osteopathic Family Physicians

Neuromuscular Medicine

Integrative Holistic Medicine

#### **Medical Specialties/Interests**

- Integrative Medicine
- Osteopathic Manipulative Medicine
- Mind-Body Medicine
- Yoga Therapy
- Culinary Medicine

## Physician Profile



### **Erica Joseph, ND, LAC, FABNO**

Naturopathic Oncologist

#### **Affiliation**

Seattle Integrative Oncology

#### **Education**

##### **Medical Degree**

**Doctor of Naturopathic Medicine**

Bastyr University

**Master of Arts (Acupuncture)**

**Bachelor of Arts (Psychology)**

Bastyr University

#### **Residency**

Seattle Integrative Oncology

#### **Board Certification**

American Board of Naturopathic Oncology

“I feel very fortunate to get to work with patients who are navigating their journey through cancer treatment and beyond. My goal is to help individuals to get through treatment as gracefully as possible, minimizing adverse side effects of treatment, maintaining quality of life and helping individuals come up with a comprehensive plan to prevent recurrent disease. I use both naturopathic medicine and acupuncture modalities to support my patients.”

*Seattle Integrative Oncology  
proudly provides one of the few  
naturopathic oncology residencies  
in the Pacific Northwest.*

## Naturopathic Oncology Services

Naturopathic Oncology Care at the Cancer Partnership consists of dedicated visits with board-certified naturopathic doctors from *Seattle Integrative Oncology* who provide oncologic integrative medicine services for patients with all stages of cancer, undergoing a variety of treatments, and into survivorship. Our physicians create individualized treatment plans to complement surgery, chemotherapy, immunotherapy, radiation and endocrine therapy in an effort to optimize wellness, and enhance anticancer effects of treatment.

Naturopathic oncology encompasses clinical nutrition and lifestyle counseling, physical activity and exercise prescriptions, general counseling, vitamin and mineral therapies, botanical medicine, acupuncture, and more.

Both Dr. Erica Joseph and Dr. Jessica Harrigan approach patient care with the goal of improving health and well-being by enhancing quality of life, and implementing strategies that may help lower the risk of recurrent disease.

## Physician Profile - Resident



### **Jessica Harrigan, ND, LAC**

Naturopathic Oncologist

#### **Affiliation**

Seattle Integrative Oncology

#### **Education**

##### **Medical Degree**

**Doctor of Naturopathic Medicine**

Bastyr University

**Master of Arts (Acupuncture)**

**Bachelor of Arts (Psychology)**

Bastyr University

#### **Residency**

Seattle Integrative Oncology

# Cancer Genetics Clinic

Our Cancer Genetics Clinic provides genetic counseling and testing to both cancer patients and others concerned about their cancer genetic health history. Our Genetics Program has two full-time Nurse Practitioners who specialize in cancer genetics, offering counseling and risk assessment. Genetic testing and counseling provide information and guidance to help people understand their risk for hereditary conditions, including specific cancers. The purpose of genetic testing and counseling is to learn if you or your relatives are at increased risk for cancer or other inherited conditions based on medical and family health history.

In 2022 our clinic participated in a research project with the objective of ensuring all newly diagnosed ovarian cancer patients receive all clinically indicated genetic testing. The goal is to develop infrastructure to facilitate genetic testing and target treatments for current ovarian cancer patients and, in the future, all cancer patients.

Families that are identified as carrying a genetic mutation, that is causing cancer in their family, can be offered increased surveillance, cancer screenings starting at a much younger age than the normal population, and medication recommendations that can help decrease risk of cancer and, in some cases, surgery. If someone tests positive for a cancer gene, this does not mean they have or will get cancer but, rather, they are at a higher risk than the normal population for being diagnosed with certain cancers. In these cases, insurance companies can approve earlier screening, testing, and surgery as being medically necessary. Having this knowledge can help you and your loved ones make more informed medical decisions.

If you have a personal or family history of cancer that includes breast, ovarian, colon, uterine, pancreatic, stomach, or melanoma, genetic testing may be appropriate for you and/or your family.



## Nurse Profile



**Joy Varady, ARNP, AGN-BC, BSN, MSN**  
Advanced Nurse Practitioner, Genetics

**Affiliation**  
Providence Regional Medical Center,  
Everett

**Education**  
Bachelor of Science, Nursing  
Washington State University  
Master of Arts, Women’s Health, ARNP  
University of Washington

**Board Certifications**  
Nurse Practitioner Adult Health  
Nurse Practitioner Women’s Health  
Genetic Counseling

“I am so excited to be in rapidly growing field of genetics. Around 10% of cancers are genetically caused from a gene you inherit from either of your parents. I love working with patients to help decide if genetic testing is appropriate for them and how this can impact their family. The goal is to either prevent cancers or provide recommendations for screening to find an early cancer. Most cancers are caused by a combination of mutations, lifestyle choices, and your environment so part of our visits are also focused on prevention.”

## Nurse Profile



### Cheryl LaFlore, ARNP-BC, BSN, MSN

Advanced Nurse Practitioner, Genetics

#### Affiliation

Providence Regional Medical Center,  
Everett

#### Education

Bachelor of Science, Nursing  
Seattle Pacific University  
Master of Arts, Nursing  
Seattle Pacific University

#### Board Certifications

Nurse Practitioner, Family

"My goal is to help my patients make personalized and meaningful choices regarding testing. Specializing in hereditary forms of cancer risk, I work with each of my patients to learn more about their individual cancer risks through family history assessment and genetic testing. Working in genetics means that I also often work with families and have the opportunity to learn what makes each family unique."

## Volunteer Spotlight: Bob Gardner, PRCP Volunteer

By Annette Colombini, Sr. Marketing Specialist  
*Volunteer Vitals, April 2021 (Edited)*

Bob Gardner has been a PRCP volunteer for more than 10 years. He is also a cancer survivor. "I had two cancers myself, plus assorted skin cancers," Bob says. "Volunteering is a good way for me to give back." As a volunteer, Bob meets with new



patients, gives them a gift bag and tells them about the Cancer Resource Center. He also reminds them of the other support services available - including counseling, art therapy, and more. One of the most satisfying aspects of volunteering is helping patients find the perfect wig. He says some want a style that looks just like their own hair, while others want

something completely different. "One woman wanted hair like Sharon Osbourne—and we found a wig that was just right. It feels good when we can help make them happy."

While Bob could not volunteer onsite for the past year (2021), he still contributed behind the scenes. He helps the Radiation Oncology team with data tracking - and he did that from home. But, he knows the in-person contact is especially impactful for patients. "It makes people feel good to talk to someone who's been there before, but is happy and living a good life now."

Ready to go after a year long at home, Bob has been a Habitat for Humanity volunteer for more than 15 years, too. He has helped build more than 20 houses. So it has been important for him to stay busy the past year. He spent time tinkering in his shop, where he does woodworking and builds electronic gadgets. "It's been a long year," he said. "I'm ready to go."

Thanks to Bob and all our dedicated volunteers who help Providence fulfill its mission and core values every day.



## Physician Profile



### Forrest Hsu, MD

Neurosurgeon  
Chief of Neurosurgery  
Medical Director, Neurosurgery

#### Affiliation

Providence Everett Neuroscience Center

#### Education

Medical Degree  
University of British Columbia

#### Internship

Royal Columbian Hospital

#### Residency

Neurosurgery  
University of Calgary Foothills Hospital

#### Fellowship

Barrow Neurological Institute

#### Board Certifications

Neurological Surgery  
Royal College of Physicians and Surgeons  
of Canada

#### Medical Specialties/Interests

- Neurosurgery
- Spine Surgery

Dr. Hsu's neurosurgical expertise includes the surgical treatment of the spectrum of cranial and spinal neuro trauma, cranial and spinal tumors, degenerative spinal disorders and spinal deformity tailoring a variety of classic open and evolving modern minimally invasive techniques to individualize the best treatment plan for each patient.

## Physician Profile



### Darryl Schuitevoerder, MD, FACS

Surgical Oncologist  
Co-Cancer Liaison Physician

#### Affiliation

The Everett Clinic, Part of Optum

#### Education

Medical Degree  
Mayne Medical School University of Queensland

#### Residency & Internship

General Surgery  
Oregon Health and Science University

#### Fellowships

University of Chicago Department of Surgery  
Complex General Surgical Oncology,  
Clinical Medical Ethics, University of Chicago

#### Board Certifications

Specialty - Surgery  
Subspecialty - Complex General Surgical  
Oncology

#### Medical Specialties/Interests

- General Surgery

"My passion lies in the surgical management of gastrointestinal malignancies. Specifically, gastric, liver, biliary, pancreas and neuroendocrine tumors of the GI tract. Other cancers I treat include sarcoma, melanoma, breast cancer and intestinal cancers. I have a particular interest in minimally invasive and robotic surgery and regularly employ these advanced technologies to remove cancers and obtain optimal outcomes for patients."

## Physician Profile



### Aaron Brown, MD

Radiation Oncologist

#### Affiliation

Northwest Washington Radiation Oncology Associates, P.S.

#### Education

Medical Degree  
University of Utah School of Medicine

#### Residency

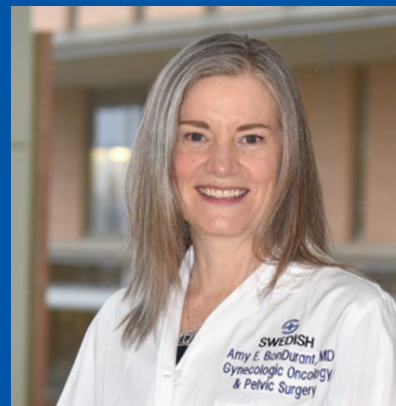
Radiation Oncology  
The University of Texas,  
M.D. Anderson Cancer Center

#### Board Certification

Radiation Oncology

"I am grateful to be able to be a part of my patients' lives as they face such a challenging diagnosis. At the Providence Regional Cancer Partnership, I am pleased to be a part of team with the expertise, resources and mission to provide high quality cancer care tailored to the needs of each individual patient. To accomplish that, the radiation oncology department uses state-of-the-art linear accelerators, brachytherapy and radioligand treatments delivered by a team of professionals singularly focused on the patient experience. I'm thankful for my colleagues in surgery and medical oncology on our multidisciplinary team at PRCP for their expertise in managing a complex disease and for all I learn from them. We listen to and learn from our patients as we go through this journey together."

## Physician Profile



### Amy BonDurant, MD, MSNE

Gynecologic Oncologist  
Medical Director, Gynecologic Oncology

#### Affiliation

Providence Medical Group NW, Swedish

#### Education

Medical Degree  
Creighton University School of Medicine

Masters in Nutrition  
American University

#### Residency

University of Virginia

#### Fellowship

Duke University

#### Board Certifications

Obstetrics/Gynecology  
Gynecologic Oncology

#### Medical Specialties/Interests

- Treatment of Gynecologic Cancers and Complex Gyn Disorders (Vulvar, Vaginal, Cervical, Endometrial, Ovarian)
- Robotic and Laparoscopic Gyn Surgery
- Nutrition

Dr. BonDurant is a 2021 Seattle Met Top Doctor Award winner. Dr. BonDurant believes what makes a great physician is not only skill, but the ability to genuinely care about patients. To be this type of physician every day, she strives to provide innovative quality medicine with sincere appreciation, compassion and respect for her patients. It's her privilege to care for such strong and courageous women during difficult times in their lives.



# Patient Support Services

Our Patient Support Team helps patients and families:

- Coping with a new diagnosis and the impact of cancer
- Family communication
- Making difficult treatment decisions
- Body image, intimacy, and sexuality concerns
- Advanced directives
- Emotional support and counseling
- Community resources
- Financial issues

## Behavioral Health and Oncology

### Social Work:\*

Cancer can present challenges to patients' social, emotional, physical and spiritual well-being. Our staff clinical psychologist and oncology social workers focus on helping patients and families maintain the emotional well-being needed to cope with the stress of a cancer diagnosis, treatment, and survivorship. Clinical social work services, assisting in access to resources, and supportive counseling are all offered.

**Cost:** *\*Services from clinical psychologist are billable services. Social Work appointments offered at no charge.*  
**425-297-6851**

### Financial Counselors

Provided assistance can be for uninsured and underinsured patients to help offset expenses.

**Medical Oncology:** 425-297-5519 or 425-297-5518

**Radiation Oncology:** Radiation Oncology Financial counselors are Government Reimbursement Specialists who also assist with Social Security and Medicaid.  
**425-261-4013**

### Clinical Nurse Specialist

Our oncology clinical nurse specialist assists patients in understanding the process of medical treatment, treatment planning, and realistic expectations for cancer care. **425-297-5524**

### Acupuncture

Acupuncture therapy can help relieve cancer related symptoms such as: pain, stress, fatigue, insomnia, anxiety, migraines, hot flashes, nausea, and vomiting. Used in Chinese Medicine for over 2,000 years, acupuncture is based on the principle that health comes from energy (Qi) flowing in a balanced state.

Licensed acupuncturists from Bastyr University are on site every Thursday. Appointments available: 9am-12pm.  
**Cost: \$48. Call 425-297-6851**

### Cancer Resource Center

Our resource center is located on the first floor. Our resources include patient educational materials, brochures, books, and many useful items that patients and family members find helpful throughout their cancer treatment journey. *We also provide interested patients with a complimentary hair piece at our healing boutique wig salon.* **425-297-5507**

### Genetics Clinic

Our Genetics Clinic provides genetic counseling and testing to cancer patients and those concerned about their cancer health history. A genetics counselor will meet with you and determine which set of genes to test, which requires a blood or saliva test. Once results have been returned, the genetics counselor will discuss results and next steps. Most insurance companies cover the cost of genetic testing and may require a referral.  
**425-297-6850**

### Integrative Medicine

The mission of an Integrative Medicine consultation is to educate the patient how to find and promote health within themselves. When working with Dr. Laura Sobieck, a patient will learn how their body functions and gain an understanding of how to interpret their body's signals to maximize their overall health. Integrative Medicine emphasizes a non-pharmacologic approach if possible and Dr. Sobieck's various techniques include osteopathic manipulation, therapeutic exercise, mindfulness-based techniques, and others to support healthy lifestyle changes. If appropriate and clinically indicated, medications may be prescribed to help support the patient's treatment goals. **425-297-6851**

# Support Groups/Classes

## Naturopathic Oncology

Naturopathic Oncology consists of dedicated visits with board certified naturopathic doctors who provide oncologic integrative medicine services for patients with all stages of cancer, undergoing a variety of treatments, and into survivorship. Our physicians create individualized treatment plans to complement surgery, chemotherapy, immunotherapy, radiation and endocrine therapy in an effort to optimize wellness and enhance anti-cancer effects of treatment. For more information and to schedule an appointment, please call **425-297-6851**.

## Nutrition Counseling

Nutrition plays an important role in cancer prevention, treatment, and survivorship. Our oncology-certified Registered Dietitian offers individualized counseling to help patient make the best dietary decisions during their cancer treatment. No referral is necessary for this service. **425-297-6851**



Courtesy of Art Therapy Group

## Support Groups

We offer a variety of support groups, some facilitated by members of the Patient Support Services team and others independently. Most support groups are currently offered as a hybrid model of both in person and virtual.

Call **425-297-5520** for more group details including dates and times.

### *Eligibility and Cost*

Support groups and classes are open to all patients, friends, family members, and caregivers in the community. Classes, workshops, and groups at the Providence Regional Cancer Partnership are free of charge. **425-297-5520**

### *Benefits of Classes and Support Groups*

- Connect with others who understand
- Receive education and information
- Talk about your experience
- Build your support network
- Learn coping strategies
- Engage in a healing process

## Art Therapy

Creative self-expression for cancer patients, survivors, and family members/ caregivers in a supportive and creative environment. Various mediums of art materials are used including paints, clay, or collage. No experience required. Art Therapy class is held on Thursdays 10:00-11:30am. **425-297-5520**

## Survivorship Series

We offer a six-week Survivorship Series quarterly that will give you ideas on maximizing your resources and strengths while also helping you adjust to life after treatment. Some areas of discussion are managing long-term side effects, new priorities and living with uncertainty, managing long-term side effects, and much more. You will receive assistance in identifying a wellness plan tailored to your individual needs.

**425-297-5520**

## Yoga for Cancer Patients

Reconnect with your body and learn how to be gentle with yourself. Practice relaxation techniques to promote better sleep and reduce stress. Learn breathing exercises to increase lung capacity, as well as specific poses to improve balance, strength, and flexibility. Facilitator: Liz Gross, Certified Yoga Instructor.

**Cost: Free in 2023. 425-297-6851**

# Services

## Clinical Research

Genomics Trials  
Screening Trials  
Treatment Trials  
Prevention Trials  
Quality of Life Trials  
Investigator Initiated

## Diagnostic Imaging

Angiography  
Breast Specific Gamma Imaging (BSGI)  
Bronchoscopy  
Computerized Axial Tomography Scan (CT)  
Digital Radiography for Mammography  
Echocardiography  
Fluorescence Bronchoscopy  
Low-dose CT Screening  
Magnetic Resonance Imaging (MRI)  
Magnetic Resonance (MR) Mammography  
Mammography  
Mediastinoscopy  
Nuclear Medicine  
Positron Emission Mammography (PEM)  
Positron Emission Tomography Scan (PET)  
Stereotactic Guided Biopsy  
Ultrasound

## Medical Oncology Services

Biotherapy  
Chemotherapy  
Chemoembolization  
Hormone Therapy  
Immunotherapy  
Infusion Center with Chemotherapy  
Plasmapheresis  
TheraSphere/SIR-Sphere

## Radiation Oncology Services

3D Conformal Radiation Therapy  
Brachytherapy - High Dose Rate (HDR)  
Brachytherapy - Low Dose Rate (LDR)  
Cerianna  
Computerized Treatment Planning  
Electron Beam  
External Beam Radiation Therapy  
Extracranial Radiosurgery  
Therapy System  
Image-Guided Radiation Therapy (IGRT)  
Intensity Modulated Radiation Therapy (IMRT)  
Linear Accelerator  
Lutathera  
Pluvicto  
Prostate Seed Implant  
Respiratory Gating

Stereotactic Radiosurgery  
Stereotactic Body Radiation Therapy (SBRT)  
Stereotactic Ablative Radiation Therapy (SABR)  
Radioisotope Therapy (RA-223)  
Systemic Radioisotopes  
Unsealed Source Radiotherapy

## Supportive Services

Acupuncture  
Advanced Care Planning  
Art Therapy  
Cancer Resource Center  
Caregiver and Family Counseling  
Classes and Support Groups  
Distress Assessment  
Individual Counseling  
Integrative Medicine Services  
Fertility Counseling  
Financial Counseling  
Genetic Counseling and Testing  
Healing Spirit Boutique  
Home Care Program / Hospice  
Lodging Assistance  
Mastectomy Education  
Mind-Body Medicine  
Naturopathic Medicine  
Nutrition Counseling  
Pain and Symptom Management  
Palliative Care Services  
Pastoral Care  
Prosthetic Services  
Rehabilitation Therapy  
Survivorship Program  
Transportation Assistance  
Wellness Program  
Wound Care Clinic

## Surgical Procedures

Catheter-based Partial Breast Irradiation  
Cryosurgery  
da Vinci Robotic Assisted Procedures  
DIEP Breast Reconstruction  
Hyperthermic Intraperitoneal Chemotherapy  
Intraoperative Radiation Therapy  
Laparoscopic Surgery  
Limb Perfusion  
Microwave Ablation  
Minimally Invasive Surgery  
Radiofrequency Ablation  
Sentinel Lymph Node Biopsy  
Ultrasonic Surgical Aspiration  
Video Assisted Thoracic Surgery

*Note: Some services by referral*

# Clinicians

## Acupuncture

Yuan Ming Lu, DAOM

## Behavioral Health

Kathryn Johnson, PhD, ATR

## Cardiothoracic Surgery

Kimberly Costas, MD, FACS

## Clinical Research

Meng Zhao, MD, PhD

## ENT/Otolaryngology

Paul Abson, MD

Jeffery Adams, MD

Prabhat Bhamra, MD

Jamie Litvack, MD, MS, FARS

Tasneem Shikary, MD

Salvatore Taliercio, MD

## Gastroenterology

Jianfeng Cheng, MD, PhD

Eduardo Chua, MD

Justin Cuschieri, MD

Sujoy Ghorai, MD

Maneesh Gupta, MD

Maiyen Tran Hawkins, DO

Janet King, MD

Friedrich Loura, MD

James Mu, MD

Robert Palmer, DO

Dhavan Parikh, MD

Arema Pereira, MD, MBBS

Darby Robinson O'Neill, MD

Edward Slosberg, MD

Kaartik Soota, MD

Donald Wakelin, MD

James Wang, MD

## Genetics

Cheryl LaFlore, ARNP-BC, BSN

Joy Varady, ARNP, AGN-BC, BSN

## Gynecologic Oncology

Amy BonDurant, MD, MSNE

Fernanda Musa, MD

Joshua Press, MD, M.Sc.

Kristin Wilcox, ARNP

## Infectious Disease

Robert Choi, MD, MPH

George Diaz, MD, FIDSA

Daniel McClung, MD

Albert Pacifico, MD

Ahmet Tural, MD

## Integrative Medicine

Laura Sobieck, DO, ABIHM

## Medical Oncology/ Hematology

Lindsey Brochu, ARNP

Connie Dao, PA-C

Yoshio Inoue, MD

Peter Jiang, MD, PhD

Ajay Kundra, MD

Amir Mehrvarz Sarshekeh, MD

Elizabeth Meyering, MD

Tammy Muller, PA-C

Prakash Thapaliya, MD

Brandea Scott-Vessel, PA-C

Dorothy Todd, DNP, ARNP

Xiaowen (Wendy) Wang, MD, PhD

Andrew Yang, MD

Zhihong (Julia) Zhang, MD, PhD

Meng Zhao, MD, PhD

## Naturopathic Oncology

Jessica Harrigan, ND, LAc-Resident

Erica Joseph, ND, LAc, FABNO

## Neurosurgery

Eric Chang, MD

Forrest Hsu, MD

David Su, MD

## Palliative Care

Andrew Yang, MD

## Pathology

Daniel Brown, MD

Alan Boudousquie, MD

Chad Ellermeier, MD

C. Diana Jordan, MD

Barry Kahn, MD

Kiran Gangadhar, MD

Luan Nguyen, MD

Kirstine Oh, MD

Martin Pointon, MD

Yanelba Toribio, MD

Don Tran, MD

Xiaotun Zhang, MD

## Plastic Surgery

Angelique Berens, MD

James Edwards, MD

Samuel Lien, MD

Jeffrey Scott, MD

## Pulmonary Disease

James Barlow, MD

Sridar Chalaka, MD

Jana Cooke, MD

Zachariah Dorey-Stein, MD

Abigail Doyle, DO

Courtney Greene, MD

Robert McCoy, MD, FCCP

David Russian, MD, FCCP

Jessica Webb, ARNP

Tomasz Ziedalski, MD, FCCP

## Radiation Oncology

Aaron Brown, MD

Darren Little, MD

William Wisbeck, MD

## Radiologists

Hassan Ahmad, MD

Ian Ch'en, MD

Stephanie Cheng, MD

Charles Daly, MD

Michael deGroot, MD

Arman Forouzannia, MD

Nicholas Galloway, MD, PhD

Kiran Gangadhar, MD

Rashed Hasan, MD

Melinda Knox, MD

Hung (Jay) Lin, MD

Brandon Liu, MD

Madison McCulloch, MD

Kirk Myers, DO

Laura Nason, MD

Nancy Neubauer, MD

Mark Pflieger, MD

Hillary Shaw, MD

Ying Wang, MD

## Surgical Oncology

Steve Martinez, MD, MAS, FACS

Patris Marandi, MD

Katherine Moreno, MD

Samantha Quade, MD, FASCRS

Darryl Schuitevoerder, MD, FACS

Perry Soriano, MD, FACS

Sara Worden, MD, FASCRS

## WSU Internal Medicine

### Residency Center

Sujan Badal, MD-Resident

Tony Huynh, MD-Resident

Tess King, MD, MPH

# Multidisciplinary Cancer Committee Members

**Dawn Gilbert, MHA, BSN, RN, CNML**  
*Cancer Program Administrator*

**Amir Mehrvarz Sarshekeh, MD**  
*Medical Director, Medical  
Oncology/Hematology*

**Megan Bannister, MSW, LSWAIC**  
**Stephan Blount, MSW, LSWAIC**  
*Social Workers*

**Mary Jo Sarver, ARNP, ACON**  
*Oncology Clinical Nurse Specialist /  
Community Outreach Coordinator*

**Joy Varady, ARNP-BC**  
**Cheryl LaFlore, ARNP**  
*Genetics*

**Tanja Pavlovic, RD, CSO, CNSC**  
*Clinical Oncology Dietitian*

**Rachel Agnew**  
*Cancer Conference Coordinator*

**Perry Soriano, MD, FACS**  
*Cancer Committee Chair,  
Quality Improvement Coordinator*

**Brandon Liu, MD**  
*Medical Director, Comprehensive  
Breast Center*

**Kathryn Johnson, PhD, ATR**  
*Medical Director, Psychosocial Services,  
Survivorship Program*

**Steve Martinez, MD, MAS, FACS**  
*Medical Director, Surgery*

**Meng Zhao, MD, PhD**  
*Medical Director, Clinical Research*

**Dean Rocco, B.S.**  
*Clinical Research Manager*

**Barry Stueve, M.Div.**  
*Spiritual Care Rep*

**Don Tran, MD**  
*Cancer Liaison Physician/Pathologist*

**William Wisbeck, MD**  
*Medical Director, Radiation Oncology*

**Hung (Jay) Lin, MD**  
*Diagnostic Radiologist*

**Laura Sobieck, DO, ABIHM**  
*Medical Director, Integrative Medicine*

**Andrew Yang, MD**  
*Medical Director, Palliative Care*

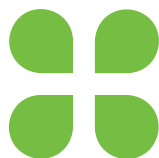
**Jocely Monzon, CTR**  
*Tumor Registrar / Cancer Registry  
Quality Coordinator*

**Char Raunio**  
*American Cancer Society Rep*



## PRCP Leadership Team

(L-R Front): **Mary Jo Sarver, ARNP, ACON**, Clinical Nurse Specialist; **Dawn Gilbert, MHA, BSN**, Cancer Program Administrator; **Perry Soriano, MD, FACS**, Cancer Partnership Medical Director; **Dorothy Todd, DNP, ARNP**, Medical Oncology Nurse Manager (L-R Back) **Samuel Felix, PharmD**, Medical Oncology Pharmacy Manager; **Dallas Kathlan, BSN, RN**, Medical Oncology Director; **Kimberly Savage**, Medical Oncology Manager; **Karen Salvati**, Clinical Program Assistant; **Kristin Callicotte, B.S., R.T.(T)**, Radiation Oncology Manager; **Dean Rocco, B.S.**, Clinical Research Manager



Providence Regional  
**Cancer Partnership**

NW Washington Radiation Oncology  
Providence Regional Medical Center  
The Everett Clinic  
Western Washington Medical Group

1717 13th Street  
Everett, WA 98201

**(425) 297-5500**

**[www.cancerpartnership.org](http://www.cancerpartnership.org)**