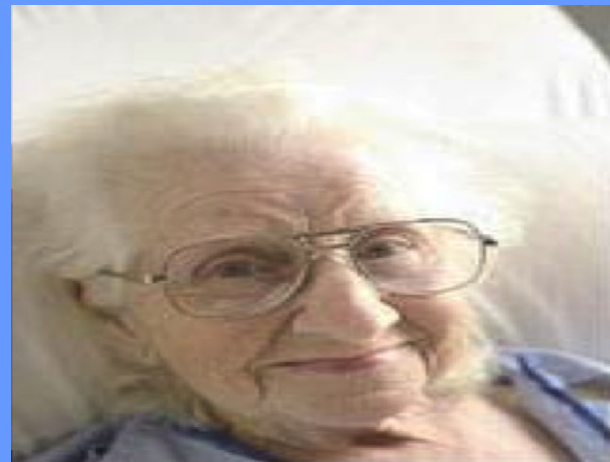


OBSERVATION



OBSERVATION: Definition

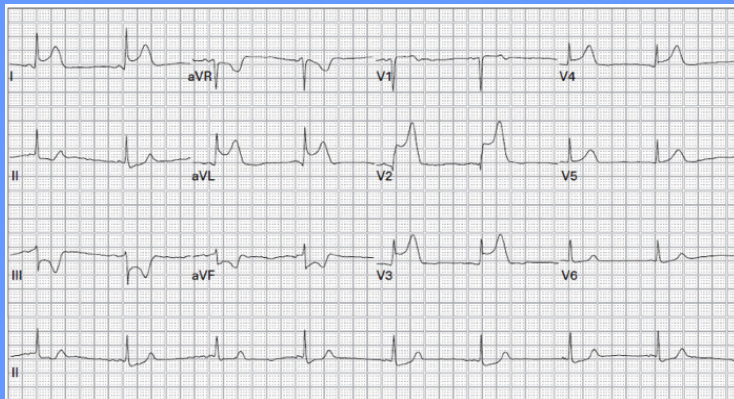
- OUTPATIENT OBSERVATION
 - The use of a bed for physician periodic monitoring and active monitoring by the hospital's nursing staff, for the patient care which are reasonable and necessary to evaluate an outpatient's condition or determine the need for an inpatient admission.



INPATIENT: Definition

- INPATIENT

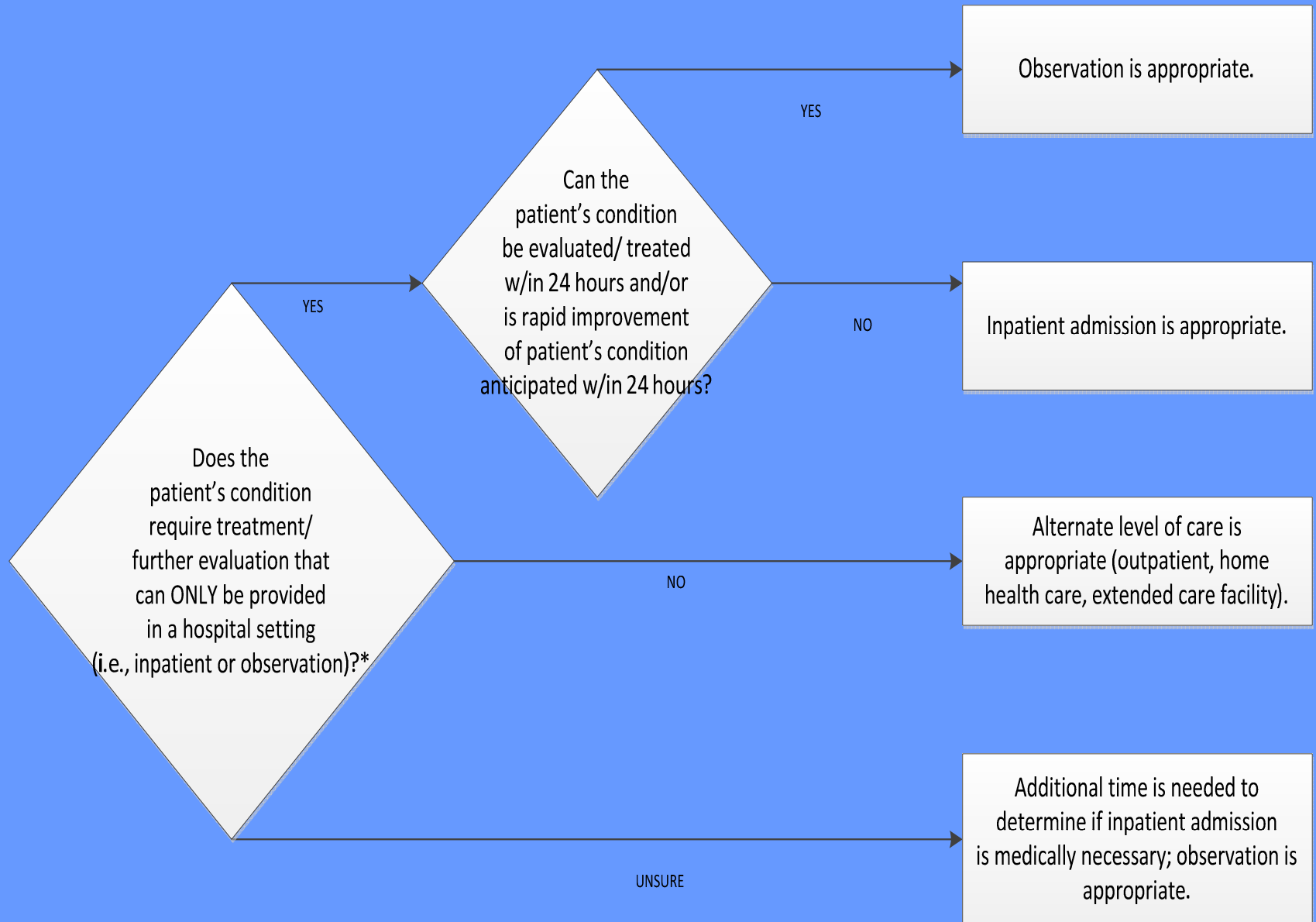
- An inpatient is a person who has been admitted to a hospital for bed occupancy for purposes of receiving inpatient hospital services. Generally, a patient is considered an inpatient if formally admitted as an inpatient with the expectation that he or she will remain at least overnight and occupy a bed even though it later develops that the patient can be discharged or transferred to another hospital and not actually use a hospital bed overnight.



OBSERVATION: HCMC

- **Managed Care Billing Guidelines** will follow the contracted rate structure with Observation service being billed hourly for a minimum of 6 hours but less than 24 hours. **Patients beyond 24 hours will have acute care inpatient service billing rates applied.**
- **Once the physician has written the order for observation services, observation time starts** at the clock time documented in the patient's medical record which coincide with the time that observation care is initiated. Observation time is not to be billed without a specific physician order specifying the need for observation services.
- **Observation time ends at the clock time documented in the physician's discharge order**, or, in the absence of such a documented time, the clock time when the nurse or other appropriate person signs off the physician's discharge order.

OBSERVATION



OBSERVATION: CONDITIONS

- According to Medicare the following are indications for an extended Observation (up to 48 hours) and generally lack medical necessity for inpatient admission unless specific complications or co-morbidities exist

OBSERVATION: CONDITIONS

- Rule Out Myocardial Infarction / Chest Pain
- Asthma or COPD
- Simple Pneumonia
- Congestive Heart Failure
- Syncope or decreased responsiveness
- Atrial Arrhythmias
- Gastroenteritis/Esophagitis
- Renal Colic/UTI
- Dialysis
- Lower back pain
- Fracture, sprain, strain of upper or lower leg

OBSERVATION: CONDITIONS

- Additional diagnosis appropriate for an observation stay according to commercial payers utilizing Milliman & Robertson criteria include the following:
 - Diabetes
 - Rule Out CVA
 - Hypertension
 - Dehydration
 - Cellulitis (?)

OBS Care Surgical Procedures

ORTHOPEDIC SURGERY

- **Cervical Fusion, Anterior**
- **Cervical Discectomy or Microdiscectomy, Foraminotomy, Laminotomy**
- **Single or Multiple Level Lumbar Discectomy**

GENITOURINARY SURGERY

- **Bladder Incision: Cystotomy**
- **Prostatectomy, Transurethral Resection**
- **Urethroplasty, Simple Repairs**
- **Urethral Suspension Procedures**
- **Orchiectomy**

GYNECOLOGY SURGERY

- **Lap assisted Vaginal Hysterectomy**
- **Vaginal Hysterectomy**
- **Laparoscopy/Laparotomy: Myomectomy, Oophorectomy, and Salpingectomy**

GENERAL & OTHER SURGERY

- **Appendectomy**
- **Laparoscopic Cholecystectomy**
- **Gastric Restrictive Procedure/Gastric Lap Band by Laparoscopy**
- **Percutaneous Cardiac Valvotomy, Mitral**
- **Mediastinoscopy**
- **Parathyroidectomy**
- **Parotidectomy**
- **Endoscopic Esophageal Diverticulectomy**
- **Laparoscopic Esophagogastric Fundoplasty**
- **Cardiac Septal Defect: Atrial, Transcatheter Closure**
- **Aortic Coarctation, Angioplasty**
- **Thyroidectomy**

OBSERVATION: CODES

- Initial Observation Care

- **99218** Detailed or Comprehensive History and Physical Examination and Straightforward or Low Complexity Medical Decision Making
- **99219** Comprehensive History and Physical Examination and Moderate Complexity Medical Decision Making
- **99220** Comprehensive History and Physical Examination and High Complexity Medical Decision Making

OBSERVATION: CODES

- Subsequent Observation Care
 - **99224 Problem Focused History and Physical Examination and Straightforward or Low Complexity Medical Decision Making**
 - **99225 Expanded Problem Focused History and Physical Examination and Moderate Complexity Medical Decision Making**
 - **99226 Detailed History and Physical Examination and High Complexity Medical Decision Making**
 - **99217 Observation care discharge**

OBSERVATION: CODES

- Same Day Admission and Discharge Observation or Inpatient Care
 - **99234** Detailed or Comprehensive History and Physical Examination and Straightforward or Low Complexity Medical Decision Making
 - **99235** Comprehensive History and Physical Examination and Moderate Complexity Medical Decision Making
 - **99236** Comprehensive History and Physical Examination and High Complexity Medical Decision Making

Health Plan Contracts for OBS CARE

		Providence Holy Cross	Henry Mayo Newhall Medical Hospital	Northridge Medical Center	San Gabriel Valley Medical Center	Arcadia Methodist	Simi Valley Hospital
Aetna (COMM)		N	N	N	N	N	N
Anthem Blue Cross (COMM - SR)		Y	Y	Y	Y	Y	Y
Blue Shield (COMM - SR)		Y	Y	Y	Y	Y	Y
Cigna (COMM)		Y	Y	N	N	N	N
Health Net (COMM - SR)		N	N	N	N	N	N
United/Pacificare (COMM)		Y	Y	Y	Y	Y	Y
Secure Horizons	SFV	Y	Y	Y	Y	Y	Y
	SCV	Y	Y	Y	Y	Y	Y
	SGV	Y	Y	Y	Y	Y	Y
	SV	Y	Y	Y	Y	Y	Y
Scan	SFV	Y	Y	Y	Y	Y	Y
	SCV/SGV	N	N	Y	N	Y	N
Medicare FFS		Y	Y	Y	Y	Y	Y