

WINTER 2020

Giving Matters

St. Jude Medical Center 

St. Jude Memorial Foundation Donor Newsletter



2019 Impact Report

Dear St. Jude Family,

Words cannot fully express my gratitude for your heartfelt support of our patients and families over the last year. Thanks to you, we had the privilege of serving our community with exciting new medical advancements and technology, as well as life-changing programs, that gave people second chances, kept families whole, and brought hope to seemingly hopeless situations.

This donor community has always been at the heart of St. Jude's pursuit of excellence. Our ability to keep pace with the latest innovations and advancements in care is due to your philanthropic generosity. Our

dedication to treating our patients and families with compassion, dignity and respect is inspired by your partnership in our mission.

We are so thankful for the loyalty and trust our community has provided for more than 60 years. The bond we hold with our community is unbreakable and only continues to strengthen. Your commitment to fuel hope and healing for your neighbors, family and friends is most cherished by those who entrust us with their care. "Thank you" can never be said too many times.

As we begin the new decade, we promise to continue to live out our mission, vision and values — no amount of time will change that because they are our guiding principles. Our expanded network of care under a unified brand, Providence St. Joseph Health, will

continue to ease the way for our patients — assuring them that they will receive a seamless continuum of high quality of care from any of our hospitals, medical groups, express cares or homecare programs.

I look forward to another exciting year of great achievements and success stories as a direct result of your compassionate generosity. Thank you again for your loyal partnership.

Warmly,

Dub Drees

Chief Philanthropy Officer
St. Jude Medical Center

 Also inside: National Doctors' Day 2020

Stories of Impact

Thanks to your thoughtful generosity which had a total philanthropic impact of \$3 million in 2019, St. Jude continues to excel as one of the top hospitals in Southern California. Here are just a few examples of the extraordinary things you made possible.

1

You helped patients suffering from a serious or life-limiting illness experience relief and comfort through music and massage therapy — two critical services under St. Jude's philanthropy-supported palliative care program.

5

Thanks to your support of our Care for the Poor program, St. Jude has plans in 2020 to break ground on a new St. Jude Neighborhood Health Center in Anaheim. Like St. Jude's current clinic in Fullerton, the new center will provide medical, dental and mental health services to un/under-insured and low-income families in the Ponderosa Park neighborhood.

2

Your support enabled St. Jude to acquire its second da Vinci Xi[®] surgical system, a robotic technology that allows surgeons to perform minimally invasive procedures with smaller incisions resulting in faster recovery time. The new Xi system allows surgeons to perform more complex procedures, thanks to greater dexterity of the instrument arms and enhanced visualization.

6

You gave nurses like Jacob Pablo, MSN, RN, CMSRN, SCRNP, the opportunity to pursue advanced degrees and certifications through your support of nursing scholarships. With his new Master of Science in Nursing, Jacob can now provide higher-quality care to patients and pursue his dream of becoming a clinical instructor to future aspiring nurses.

3

Our philanthropist-funded stroke endowment allowed six of our neurologists to pursue research and clinical advances which will strengthen our ability to foster more successful outcomes for patients, keeping us at the forefront of stroke care as a nationally recognized Advanced Comprehensive Stroke Center.

7

Your giving put a new, state-of-the-art radiation system called AlignRT[®] in the hands of our radiation therapists and oncologists. The infrared technology uses 3D imaging to monitor patient motion to millimeter accuracy, in order to only radiate the tissue that needs treatment and protect the vital organs from getting any of the radiation dose.

4

Patients of our cardiac rehabilitation program benefited from new donor-supported equipment, including a Dynatronics Star Trac[®] S-TRC Treadmill to provide more exercise equipment options and will simulate a walking program that patients can continue at home.

8

You made our 2019 A Walk Among the Stars Gala & Fashion show the most successful one to date. Together, we raised a record-breaking \$580,000 to help bring lifesaving 3D mammography technology to the women of our community.

➤ Do you have a story to share?

Let us know at SJMF@stjoe.org and you could be featured in a future publication!

4



2



3



1





5



6

7



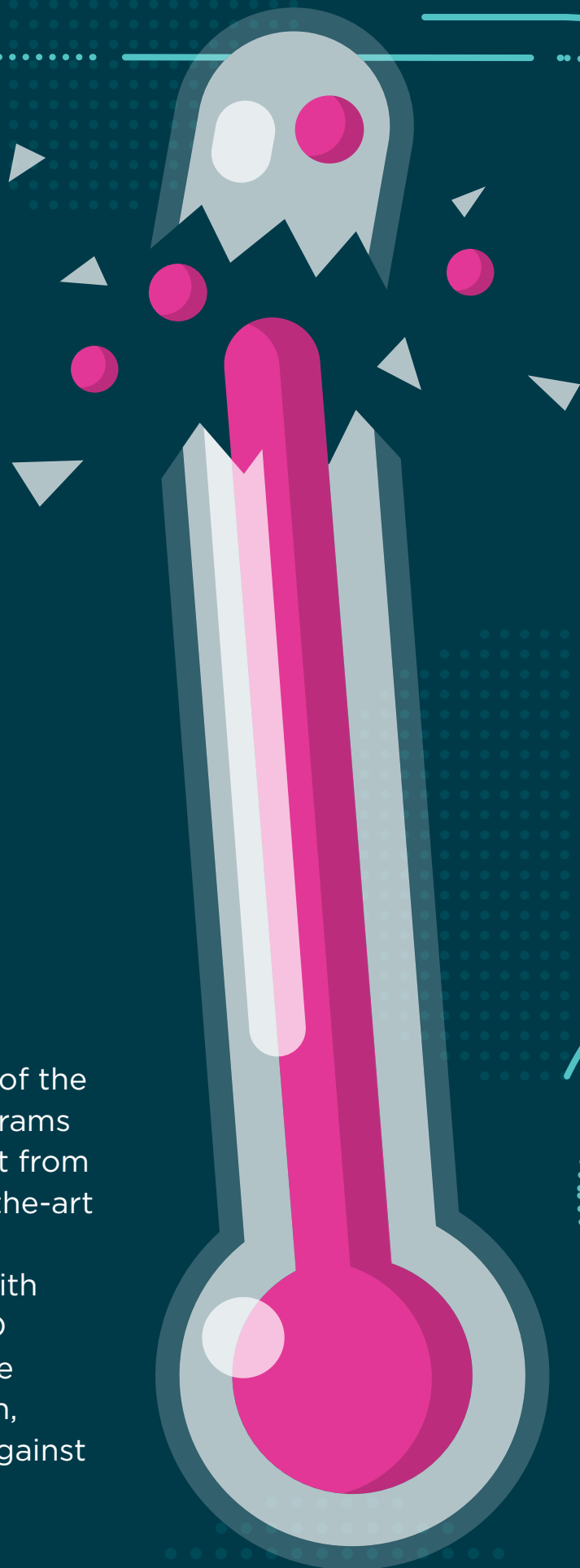
8





100% of Goal Raised for 3D Mammography!

Thanks to you, each and every one of the 30,000 women receiving mammograms annually at St. Jude will now benefit from the improved accuracy of state-of-the-art 3D mammography technology. By replacing our existing equipment with the six new philanthropy-funded 3D units, you've given every woman the greatest chances for early detection, successful treatment and survival against breast cancer.



National Doctors' Day 2020

A special way to thank your physician



The physicians at St. Jude offer a level of expertise and compassion that has helped make us one of Southern California's most advanced and respected medical centers.

But what truly touches each and every one of our doctors is the thanks and kind words they receive from you.

We invite you to recognize a special physician on National Doctors' Day, March 30, to express your thankfulness for the care you have received. You can also make a gift in their honor to help St. Jude and its physicians continue to provide exceptional care.

➤ Make your gift and send your doctor a personal note of appreciation by visiting donate.stjudemedicalcenter.org/docsday or calling (714) 992-3033.

Dr. Bruce Mutter,

My wife and I feel very fortunate to have such a good and caring doctor as our primary physician for over the last 25 years. You always make us comfortable and feel welcomed with each visit. Thank you for your care, expertise and for simply being you!

Happy Doctors' Day.



Philanthropy in a Flash ⚡

For your gift of time, treasure and talent, we extend our heartfelt thanks to:



Fullerton Firefighters

who raised \$30,000 through their PINKtober fundraiser to enhance our cancer and neuroscience services.



The Simple Greek

restaurant that offers employees the opportunity to give back by showing their badge at purchase and proceeds will benefit St. Jude.



CENTURY 21 Discovery

as they selected St. Jude as a beneficiary of their Discovery Charity Foundation event, donating a total of \$10,000.



Stater Brothers Charities

that presented a \$2,500 check to St. Jude in support of the advancement of clinical excellence.



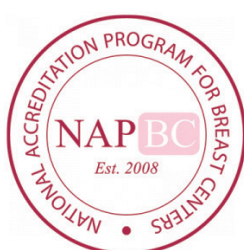
Rosary Academy for their annual "Go Pink" campaign to support our Kathryn T. McCarty Breast Center with a gift of \$4,000.



Our amazing volunteers

who contributed 95,000 hours toward supporting patient care in 2019.

Thanks for Supporting Award-Winning Care



Featured Inside

- Stories of Impact
- National Doctors' Day 2020
- Philanthropy in a Flash

Contact Us

St. Jude Memorial Foundation
1440 N. Harbor Blvd., Suite 200
Fullerton, CA 92835
(714) 992-3033 • SJMF@stjoe.org

 stjudemedicalcenter.org/foundation

 facebook.com/stjudememorialfoundation

Save the Date



National Doctors' Day 2020

March 30, 2020

To honor your physician and send them
a personal note of gratitude, visit
donate.stjudemedicalcenter.org/docsdays



Neighbors Helping Neighbors

May 14, 2020

Summit House Restaurant
2000 E. Bastanchury Road, Fullerton

Learn how St. Jude's Care for the Poor programs
are increasing access to health care for
vulnerable populations. For more information,
visit stjudemedicalcenter.org/NHN

A WALK
AMONG
THE

Stars

GALA & FASHION
SHOW 2020

SUPPORTING THE ST. JUDE
CROSSON CANCER INSTITUTE

Starring cancer patients
and survivors

OCTOBER 24, 2020

ANAHEIM MARRIOTT
700 W. Convention Way
Anaheim, CA 92802

For more information, visit:
stjudemedicalcenter.org/WATS