

2023 COMMUNITY BENEFIT SNAPSHOT

Providence Willamette Falls Medical Center and communities



In 2023, Providence Oregon continued its tradition of compassion and dedication to our communities, with Providence Willamette Falls Medical Center investing more than \$19.2 million to improve community health. These targeted investments included \$1 million in community health services and \$3 million in free and low-cost care.

PROVIDENCE INVESTS IN OREGON'S HEALTH

HELPING FAMILIES NAVIGATE HEALTH AND COMMUNITY SERVICES

In 2023, Providence helped the Todos Juntos organization expand its Family Resource Advocates program to provide holistic wraparound services to families living in rural Clackamas County communities. With support in both English and Spanish, Todos Juntos advocates worked to help empower, educate and assist families with children navigate health, education and social services, and brought families together through engagement events.

SUPPORTING MENTAL WELLNESS IN THE LATINX COMMUNITY

Providence funding helped Raices de Bienestar expand its culturally specific mental health counseling program and community engagement efforts. As a community-based program working to improve the emotional health of Latinx people, Raices de Bienestar increased the number of people they could serve with services such as individual therapy. They also offered community activities that attracted nearly 2,000 individuals in 2023.

EXPANDING SUPPORT FOR DISABLED IMMIGRANTS AND REFUGEES

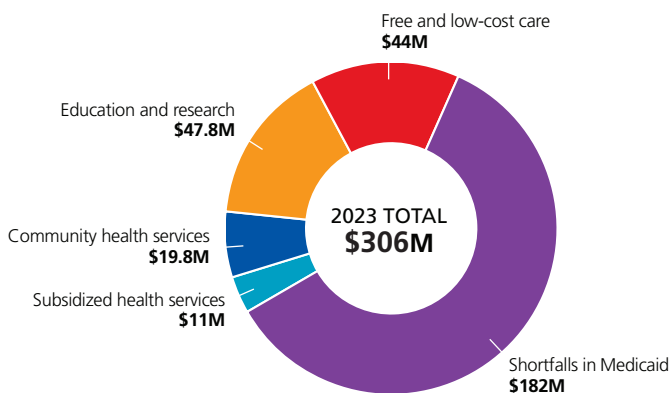
With funding from Providence, the Immigrant and Refugee Community Organization (IRCO) was able to expand its Disability Legal Services (DLS) program. The DLS program helped immigrants and refugees with disabilities obtain Social Security Income and Social Security Disability Income benefits. More than 90% of IRCO clients successfully obtained benefits, thus directly improving economic security for these individuals and families.

GIVING TO OUR COMMUNITIES IN 2023*

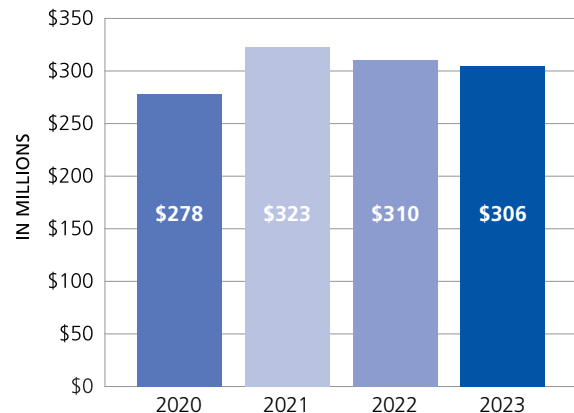
| | Community benefit TOTAL | Free and low-cost care | Shortfalls in Medicaid | Community health services | Education and research | Subsidized health services |
|--|-------------------------|------------------------|------------------------|---------------------------|------------------------|----------------------------|
| Providence Willamette Falls Medical Center | \$19,217,584 | \$3,020,885 | \$14,352,303 | \$1,075,415 | \$2,062 | \$766,919 |
| All other Providence hospitals in Oregon | \$286,775,231 | \$41,425,265 | \$168,114,315 | \$18,780,185 | \$47,891,867 | \$10,563,600 |
| TOTAL | \$305,992,815 | \$44,446,149 | \$182,466,617 | \$19,855,600 | \$47,893,929 | \$11,330,519 |

*Community benefit giving and reporting is based on Oregon Health Authority instructions for 2023. Totals do not include the shortfalls in Medicare.

2023 OREGON COMMUNITY BENEFIT SPENDING



OREGON ANNUAL COMMUNITY INVESTMENT*



*Totals do not include the shortfalls in Medicare