
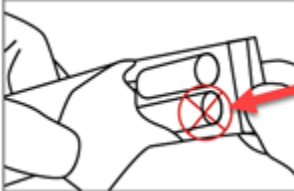


COVID-19 Nasal Swab Collection Guidelines

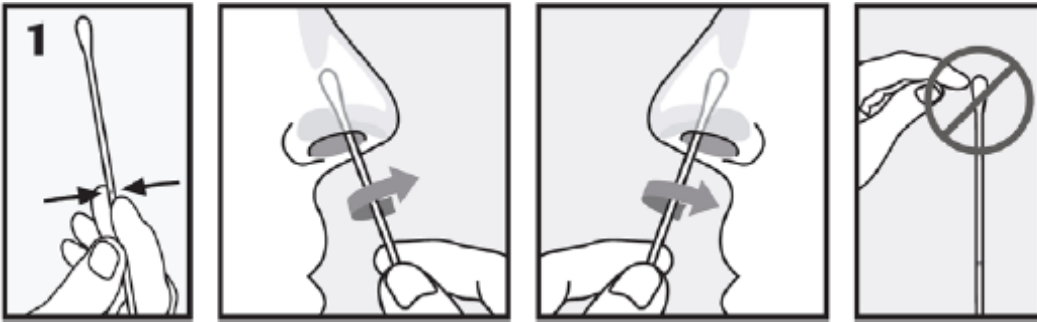
Due to a global shortage of swabs, these swabs have been FDA-approved for COVID-19 testing and validated for the Oregon Region. The gold standard is to use a naso-pharyngeal swab, however, these swabs are not readily available. Thus COVID-19 nasal swab collection test kits have been prepared, adding different available and approved swabs (sensitivity of Nasal Swab = 90% of sensitivity of NP swab). **These substituted swabs in the kits below are for nasal or oropharyngeal use only. Do not use these swabs to obtain a nasopharyngeal specimen.**

<h2>Culture Swab with Medium</h2>		<p>Supplies needed:</p> <ul style="list-style-type: none"> • COVID-19 Saline kit • Pair of non-sterile scissors • PPE 	
1.	Open swab pouch		
2.	Discard white media tube (you only need the swab)		<p>Discard white media tube packaged with the swab</p>
3.	Use swab to collect a sample from the patient	<p>Using standard technique collect nasal (anterior nares) or oropharyngeal (if unable to use nares) specimen. Please follow your institution's guidelines for safe specimen collection at all times.</p>	
4.	Place swab in saline tube	<p>After collecting the specimen, place swab in saline tube, cutting off the plastic shaft so that the saline tube lid closes <u>tightly</u>. Transport specimen to the laboratory.</p>	

<h2>Dry swab without Medium</h2>		<p>Supplies needed:</p> <ul style="list-style-type: none"> • COVID-19 Saline kit • PPE 	
1.	Open swab pouch		
2.	Use swab to collect a sample from the patient	<p>Using standard technique collect nasal (anterior nares) or oropharyngeal (if unable to use nares) specimen. Please follow your institution's guidelines for safe specimen collection at all times.</p>	
3.	Place swab in saline tube	<p>After collecting the specimen, place swab in saline tube, breaking off the plastic shaft so that the saline tube lid closes <u>tightly</u>. Transport specimen to the laboratory.</p>	

COVID-19 Nasal (anterior nares) Swab Collection

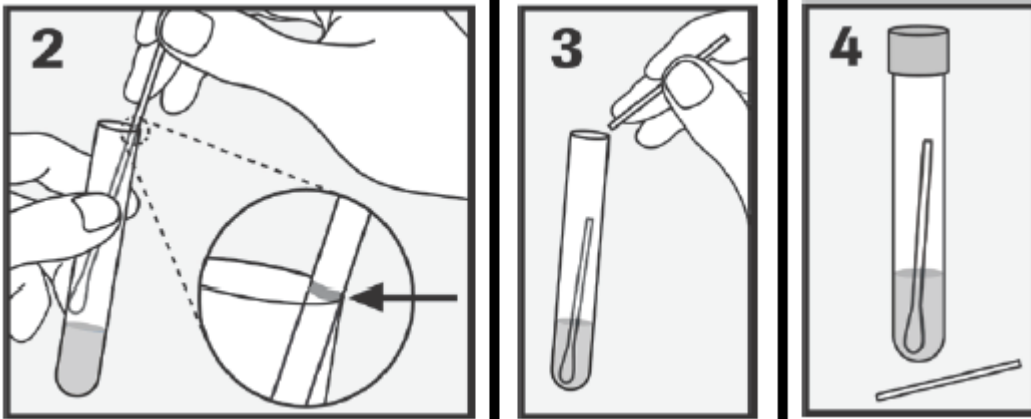
WARNING: DO NOT PRE-WET SWAB – use only one swab for both nares



1. Collect: Hold the swab towards the end of the shaft. Insert the swab 1-2 cm into one of the anterior nares. Rotate the swab against the nasal mucosa for about 3 second and withdraw. Repeat the other anterior nare using the **same swab**.

Do not let the swab touch any surface before placing it into the collection tube.

Uncap: Remove the cap from the COVID-19 Saline kit tube and lower the swab specimen into the tube.



2. Break or cut: Carefully leverage the swab against the tube rim to break the swab shaft or cut the swab shaft to fit into tube.

3. Close: Tightly re-cap the collection tube properly without the shaft interfering with the thread on the rim to prevent the transport medium from leaking and sample rejection.

4. Transport: Hand deliver to the laboratory. (Stability: Ambient 8 hours; Refrigerated 1 week; Frozen: 2 months)