
PAST FORWARD

The Newsletter of the Sisters of Providence Archives, Seattle

Summer 1994 Volume 2, Issue 3

COME AND SEE!

Sisters of Providence Historical Exhibit

March 25, 1994 was a banner day in our Archives' history! That day marked the completion of the installation of historical exhibits at the Sisters of Providence Provincial Administration and Health System Offices.

Since the exhibits were installed, we have enjoyed "people watching" as individuals view the exhibit. Responses have been positive:

"Congratulations on the creation of magnificent exhibit cases. We hear nothing but praise for them."

"What wonderful reminders of our rich history."

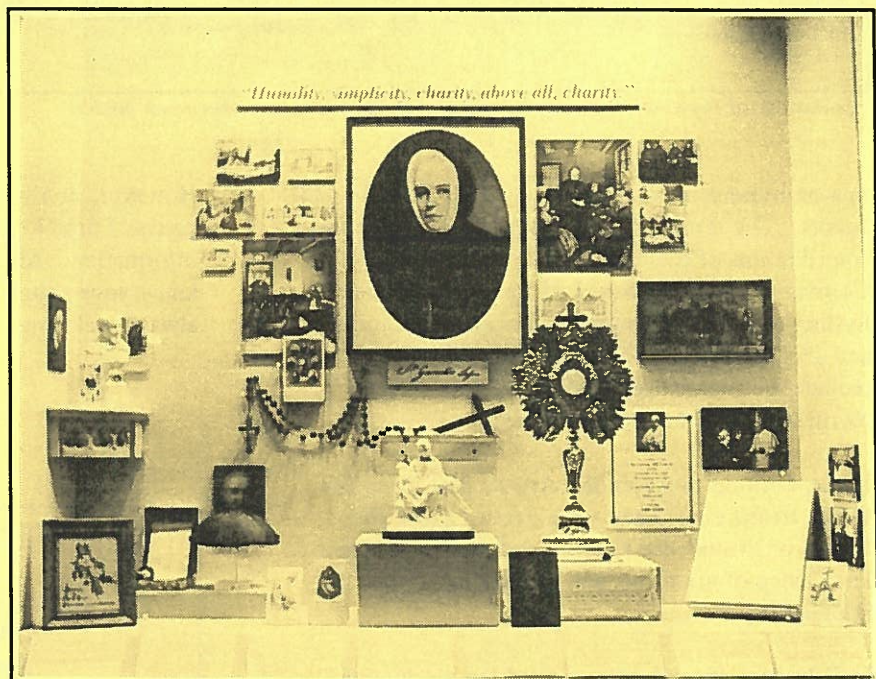
"The display will not only be pleasing to casual visitors, who have time for only a brief glance, but will also provide hours of 'viewing pleasure' for those who have the opportunity to study and meditate upon the various artifacts."

It is hard to believe that an idea for display cases at the Offices has progressed through three Provincial Superiors and evolved into this historic display.

One year ago the Exhibit Advisory Committee gathered for the first time to plan the content and design of the exhibits. A whirlwind of activity was about to begin! A mission statement was prepared, exhibit

themes selected, and artifacts, photographs and manuscripts identified for display. When it became apparent that a professional exhibit designer was needed to assist with the project, Artech, Inc., Seattle was awarded the contract for exhibit design. Sister Kathryn Kurtz, SP, Provincial Superior and Sister Karin Dufault, SP, Chairperson of the Board generously contributed funds from the Provincial Administration and Health System to support the exhibit design.

In December, renovations at the Health System Office were complete and the empty display cases



"Humility, simplicity, charity, above all, charity." Mother Emilie Gamelin exhibit

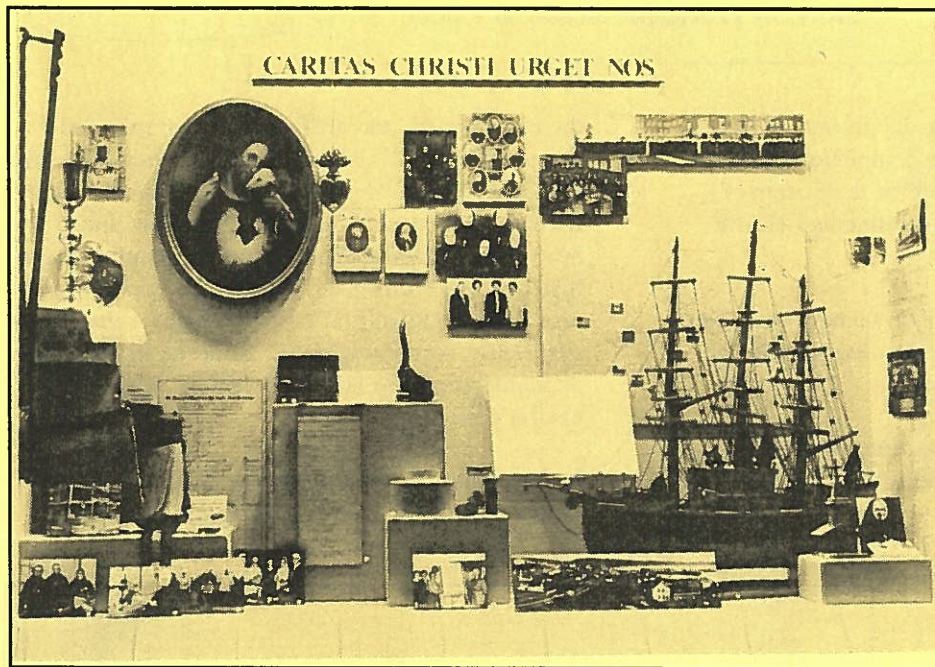
peaked everyone's interest. Many inquired about the exhibit progress and content unaware of the

amount of work required to design and install historical exhibits. The next few months were very busy, challenging and exciting!

Beginning in January, the Artech staff worked closely with the Archives staff to review and grasp 150 years of Sisters of Providence history, develop the exhibit story line, and select items for display. Using Archives' artifacts, photographs and manuscripts, they visually focused and interpreted the history of the Sisters of Providence in Sacred Heart Province. Divided between the two Office floors, the exhibit story line focuses the two 24th floor cases on Mother Gamelin and Mother Joseph

and riser boxes. Care was given to each artifact, large or small, in handling, preparation for exhibit, and wrapping and transportation to the display site. At the same time, drafts of label text were written and rewritten. The Archives staff worked diligently to condense information yet keep the labels informative and interesting. At this point, a sense of humor helped everyone and the end was in sight!

Beginning Monday, March 21, the process of exhibit installation began. Minor glitches were overcome and by Friday afternoon, with display case glass installed, all were able to reflect on a job well done.



"Caritas Christi Urget Nos." Foundation and growth of ministry in the Northwest exhibit

in a more personal way reflecting their charism and talents. The three 25th floor exhibits illustrate the contributions of the Sisters of Providence Religious Community and the Sisters of Providence Health System to society through health care, education and social services in Sacred Heart Province. They include the foundation in Montreal, the early Northwest, and the mission today.

It was exciting to watch the Artech staff bring life to our treasures. They were excited about the Sisters of Providence mission and ministry. Their knowledge of art forms and art processes was impressive.

In February, the exhibits reached the production stage which included cleaning and strengthening artifacts; photograph reprints; prop construction;

Throughout the exhibit design process, we received assistance and contributions from many people: time, ideas, support and encouragement from the Exhibit Advisory Committee; photographs, artifacts and information from Sisters, office personnel and others; and photograph reprints and information from the General Administration.

The exhibits are scheduled to remain in the Provincial Administration and Health System Offices for three years.

However, don't wait that long to view it and give yourself time to absorb the visual and textual information. After you see the exhibits, let us know your comments and suggestions. They are always welcome.

For more information about the Archives contact:

**Sisters of Providence Archives
4800 37th Avenue SW
Seattle, WA 98126
(206) 937-4600**