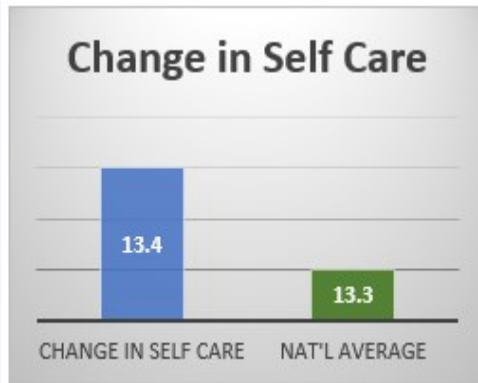
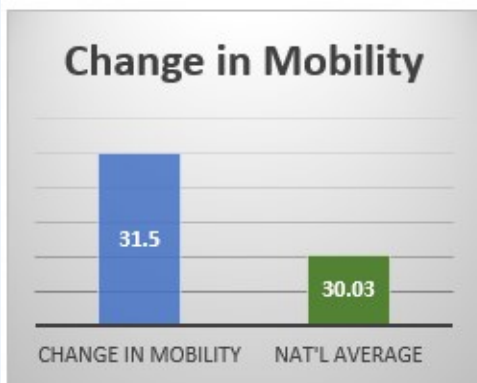


A spinal cord injury can happen to anyone at any age. In 2022, St. Luke's provided inpatient rehabilitation services to more than 130 inpatients who experienced a spinal cord injury or illness. This includes traumatic and nontraumatic injuries resulting in tetraplegia or paraplegia. Inpatients receive at least 3 hours of therapy a day, 5 days a week, and have an average length of stay of 20 days, with 88% discharged back home to the community.

**Functional Outcomes:** represent total increase in independence with self care and mobility tasks from admit to discharge. St. Luke's goal is to be higher than the nation.



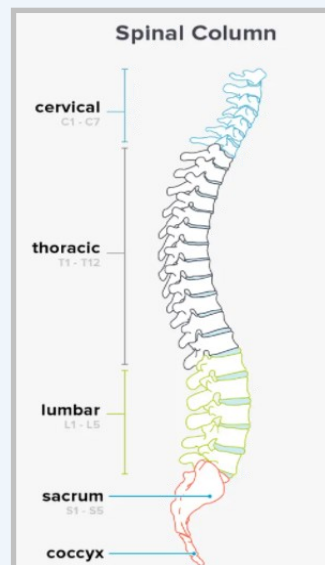
### Age of patients in SCI Program

Age	Number of Patients
0 - 17	2 (1.5%)
18 - 40	36 (27.3%)
41 - 64	48 (36.4%)
66 - 85	43 (32.6%)
86+	3 (2.3%)

### Patient Satisfaction

Based on a national survey from Uniform Data System for Medical Rehabilitation (UDSMR), MedTel Outcomes and Focus on Therapeutic Outcomes, patients reported the following:

- 2.3%** discharged to long term care
- 8.3%** discharged to acute care hospital
- 88.6%** discharged to community
- 93%** overall satisfaction
- 20** days is average length of stay



### Patient Demographics:

- Ages served: 8-87
- Average age: 53
- Female: 53 patients (40.2%)
- Male: 79 patients (59.8%)
- Traumatic SCI: 60 (45.4%)
- Non-traumatic: 72 (54.5%)

### Peer Support Group

St. Luke's offers a hybrid in-person/virtual support group for individuals who have experienced a spinal cord injury.

To register to attend, please call (509) 473-6681 or email:

[srlsupportgroups@providence.org](mailto:supportgroups@providence.org)

### Inpatient Case Management

Phone: 509-473-6058 Fax: 509-392-5684

For a list of all **Outpatient Therapy** locations near you, visit [providence.org/locations](http://providence.org/locations)

Phone: 509-473-6869 Fax: 509-392-5685

These accreditations assure patients the highest quality care and results possible.



Visit [providence.org/stlukes](http://providence.org/stlukes) for a complete list of CARF accredited programs

