

# Facility Safety

By Pamela Long, HEM, CEES

# Facility Safety

- **All** workplace injuries and illnesses are preventable by working safe.
- Use the proper **Personal Protective Equipment** for your job tasks
- **Play an active role in creating a safe and healthy work environment** for you and your coworker and patients.

# Safety Components

- Safety Policies and procedures (Docushare)
- Safety Committees
- Safety and Hazard Inspections
  - Equipment Safety
- Department Meetings
  - Be Proactive
  - Openly discuss safety
  - ***Report any Hazard immediately!***

# Emergency Contacts

*Employees must understand how to call for  
Emergency Assistance.*

**Hospital Emergency call 111**

**Non Hospital dial 9 then 911**

# CODE RED- Fire

- **R**escue, and **R**emove if safe
- **A**larm, or **A**lert
- **C**ontain, or **C**lose
- **E**xtinguish, or **E**vacuate

Assume it is real

Use stairs

Wait for “ALL CLEAR”



# FIRE PROTECTION BASICS

- No material can be stored within 18” of the sprinklers or ceilings
- Maintain clear access to exits
- Do not block fire extinguishers or electrical panels, or Medical Gas Shut off Valves.
- Fire Doors



# Fire Protection Basics

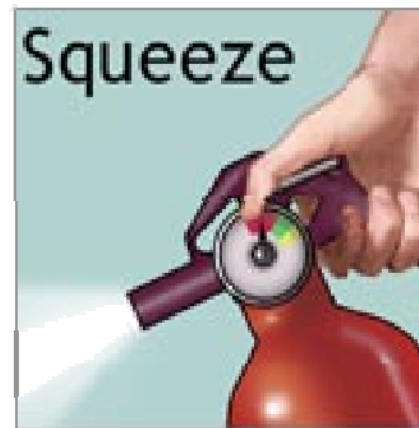
**It is your responsibility to know the locations of:**

- Fire Alarm Pull stations
- Fire Extinguishers
- Fire Exits
- Department evacuation meeting locations



# HOW TO USE A FIRE EXTINGUISHER

- **Pull**
- **Aim**
- **Squeeze**
- **Sweep**

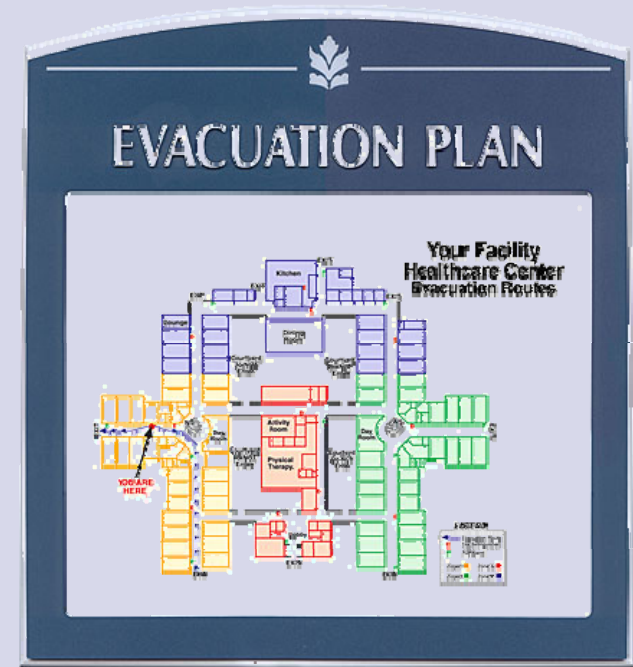




# HOSPITAL EVACUATION

**Evacuation is extremely rare in hospitals.**

- 1<sup>st</sup> – horizontal evacuation  
Defend in Place
- 2<sup>nd</sup> – vertical evacuation
- 3<sup>rd</sup> – complete evacuation



# Codes

## **CODE BLUE – Medical Emergency**

- Heart Stops, no Respiration



## **RRT - RAPID RESPONSE TEAM –**

- You need more in depth assessment and evaluation of your patient, or immediate assistance with a patient in crisis.

# Chemical Safety

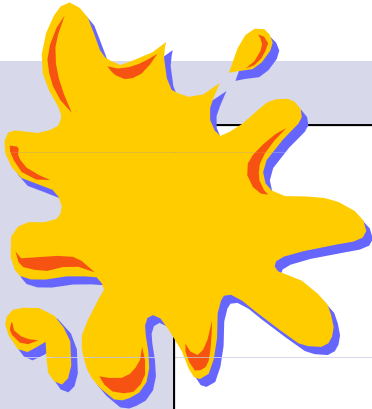
## Right to Know Standard

- Know the hazards of material before you use it. Know location of ***Material Safety Data Sheets*** (MSDS)
- MAX COM – online link to MSDS



# CODE ORANGE

“If spill occurs”



**Only authorized and trained personnel shall handle hazardous materials.**

- **Dial 111**, and provide an exact location
- **Secure area, move personnel, stay out until you hear - “ALL CLEAR”**
  - Waste Products at PSPH- Chemicals (Lab, chemo waste)
  - Sharps & biological – (needles, bodily fluids, etc.)

# CODE Brown - Internal/External

**We must be prepared for disasters**

Types of Disasters -

- Internal Disaster - Fire, Bomb Threat, Power failure, Water, or Communications down.
- External Disaster - Mass Casualty Incident, Earthquake, Flood, Bioterrorism, Severe Weather, Industrial HAZMAT.

# CODE BROWN – Hospital Incident Command

- *Department Managers and Supervisors are responsible for ensuring all assigned staff know and understand their roles.*
- *Incident Command Center will set up in the Providence Room.*
- *PSPH will support four modes of communication to employees, physicians, volunteers, clinics, and other agencies during a Code Brown.*

# CODE YELLOW – BOMB THREAT

- Report telephone threats immediately – **dial 111**
- Never touch a suspicious object, secure area, move people away, wait for “ALL CLEAR”



# Codes

**ROSE TEAM-** Response Obstetrical  
Surgical Emergency Team

**Code Silver-** Person with a weapon or  
hostage

**Code Gray-** Verbally escalated person,  
harming self or others



# Codes

**Code Black** — Adult Missing Patient

**Code Amber** — Newborn /Pediatric Abduction

Newborns are tagged – if alarm goes off or you hear overhead page

We all observe staff and visitor for children or babies. Secure all exits.

# Fall Team –

## Falls outside of patients room



- **Call 111** – give exact location
- Special Team of Transporters, Security and nurse(s) bring mobile lift equipment to safely lift patient/visitor from floor to gurney or wheelchair.

# Workplace Violence



- **Workplace Violence Zero Tolerance! Examples include: Any physical assault, threatening behavior or verbal abuse occurring in the work setting. It includes but is not limited to beatings, stabbing, suicides, shootings, rapes, near suicides, psychological traumas such as threats, obscene phone calls, an intimidating presence, and harassment of any nature such as being followed, sworn at or shouted at.**

# Contacting Security

**Office: 37918**

**Operator: 0, 111, 491-9480**

**Panic alarms**

**Code Gray**



# Security Points



- Wear ID Badge at all times, if misplaced report missing badge
- Lock vehicles at all times, place valuables in trunk or out of sight
- Secure valuables during shift
- Contacting Security
  - Hospital Operator: “0” or “111” or 491-9480
  - Security office: 37918
- Report any violence or harassment to Security
- Report suspicious activity to security, supervisor and/or manager

# SAFETY SUMMARY

Safe Workplaces prevent injuries, illnesses and save lives. Safety is everyone's responsibility!

